





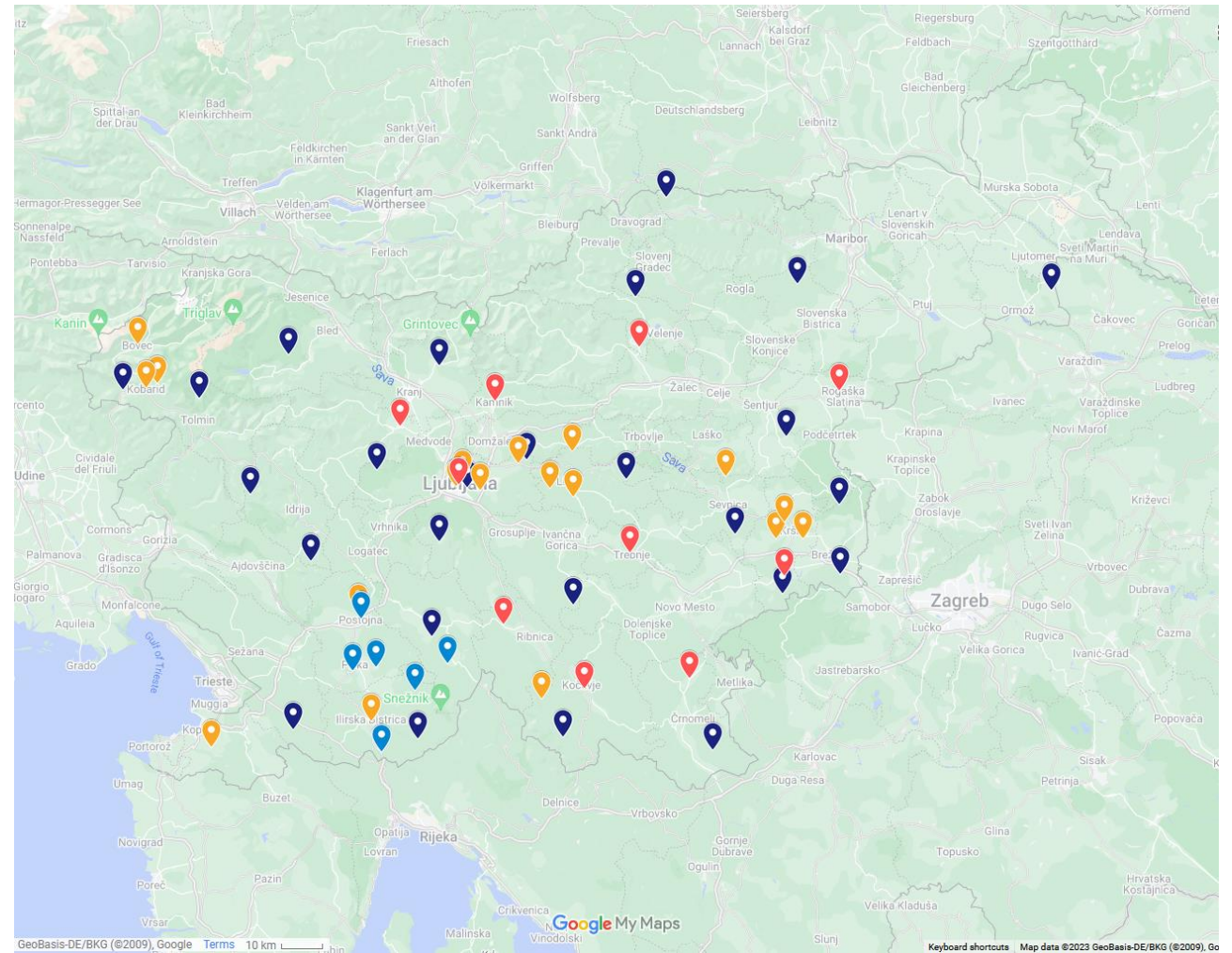
SLOVENIAN SEISMIC NETWORK

Activities report AUG 2024






Jurij Pahor, ARSO

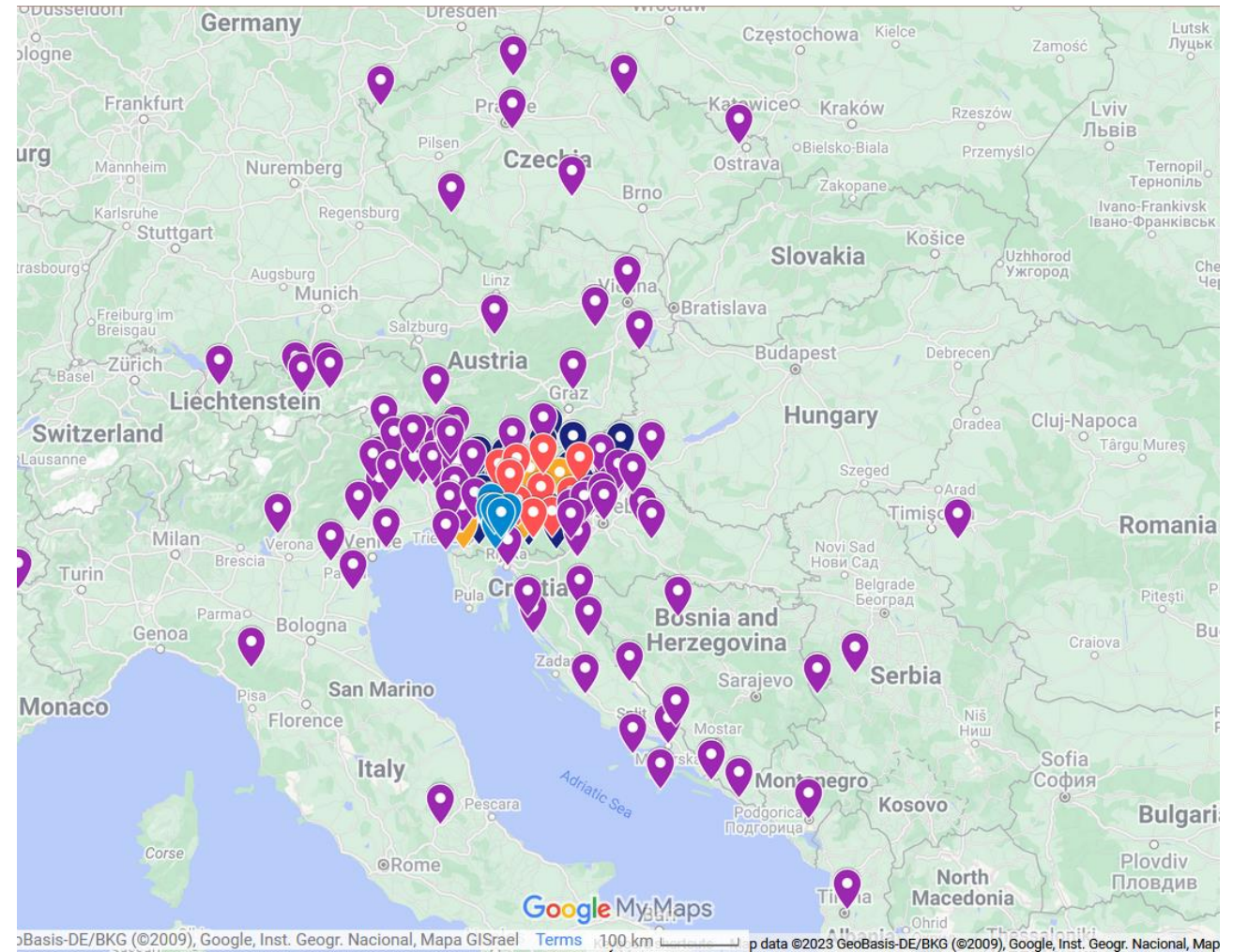
Seismic stations

-  Permanent network (26 6-channel BB)
-  Supplementary network (18 misc)
-  EPOS NFO network (6 Etna2)
-  RaspberryShake school network (10 RS)



Seismic stations

-  Permanent network (26 6-channel BB)
-  Supplementary network (18 misc)
-  EPOS NFO network (6 Etna2)
-  RaspberryShake school network (10 RS)
-  Import in real-time (>100)

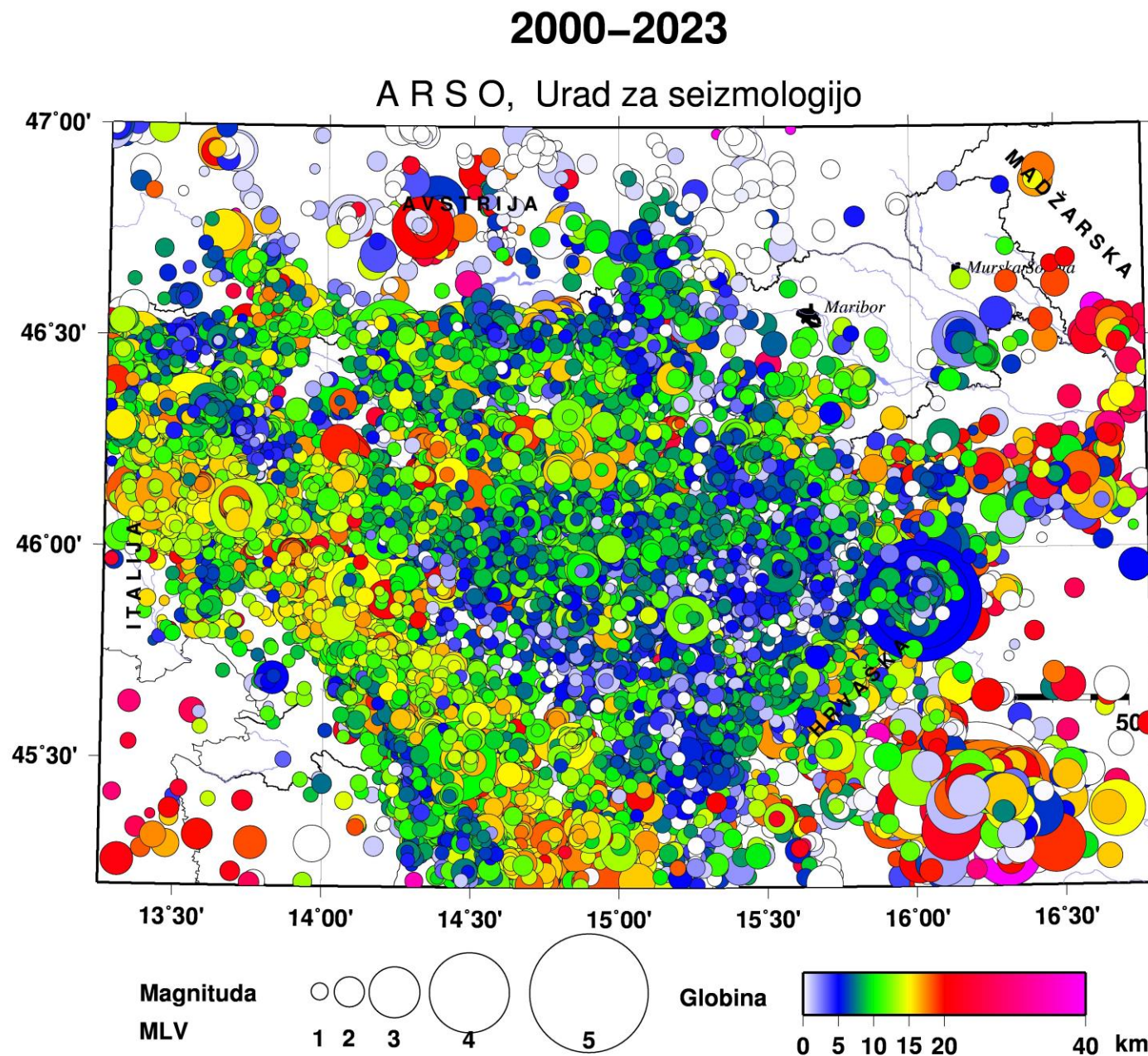


Seismicity in Slovenia

2000 – 2023 catalog

>2000 eq/year

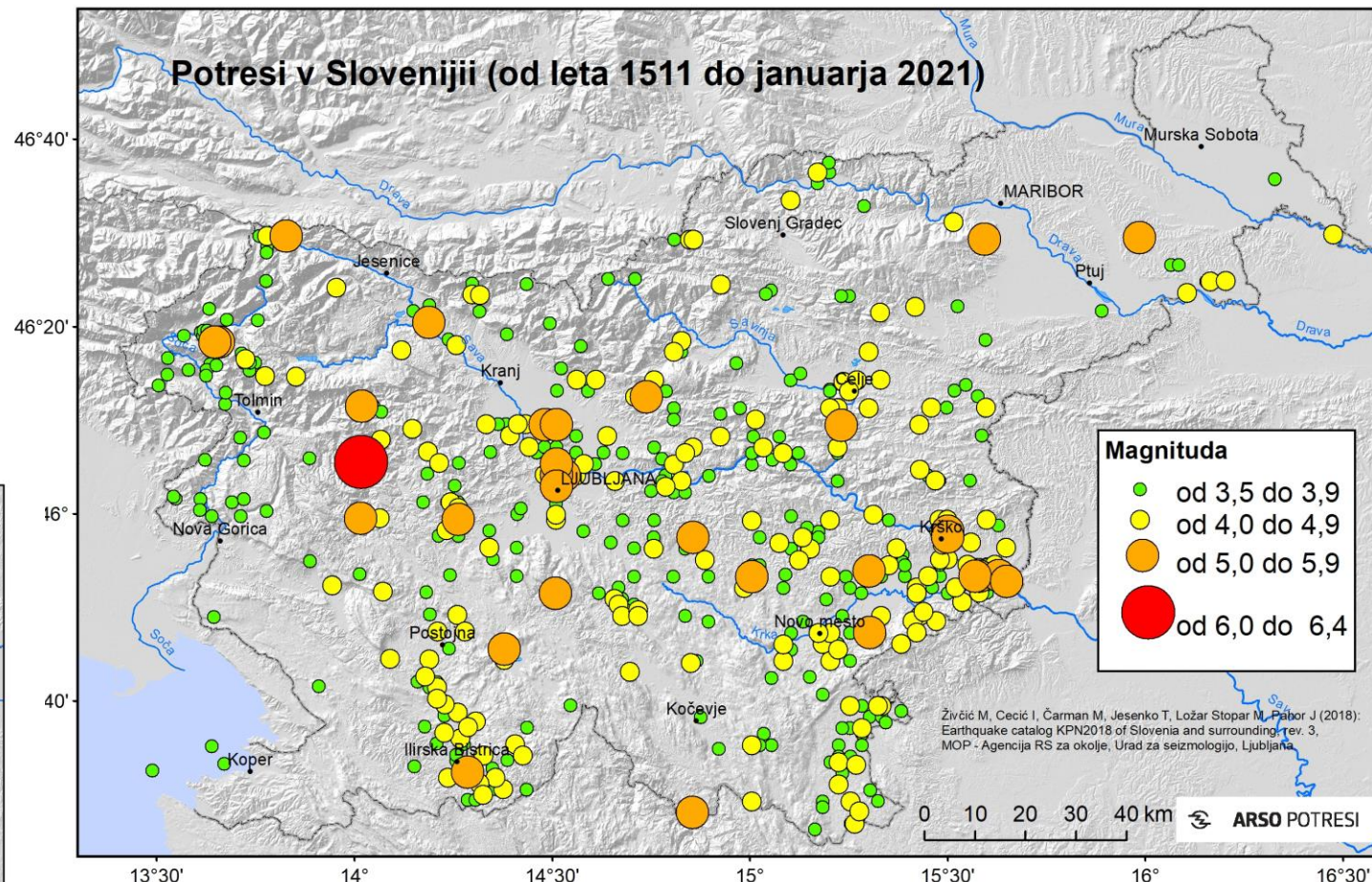
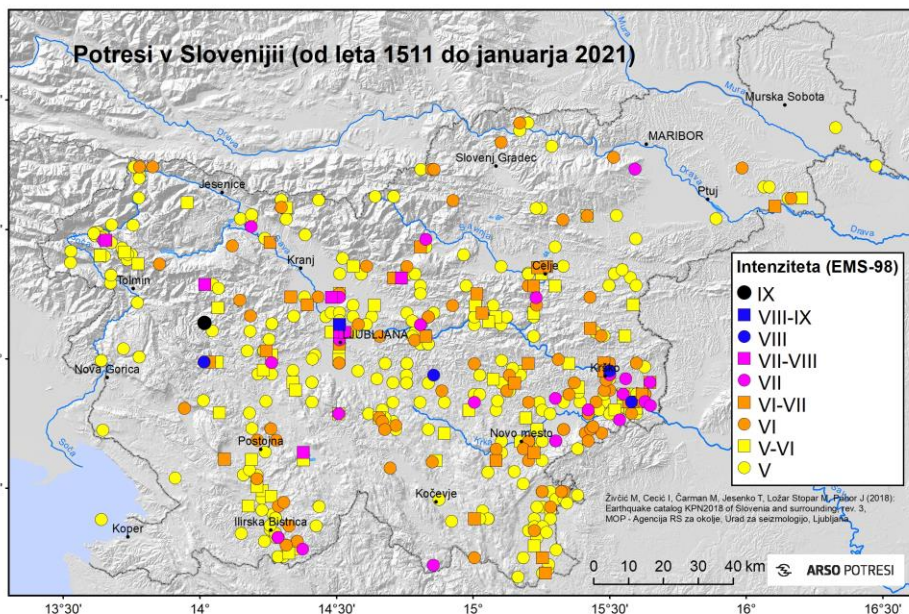
>200 felt/year



Seismicity in Slovenia

Larger events

- max Mw 6.7
- max Io IX



Retune RT system

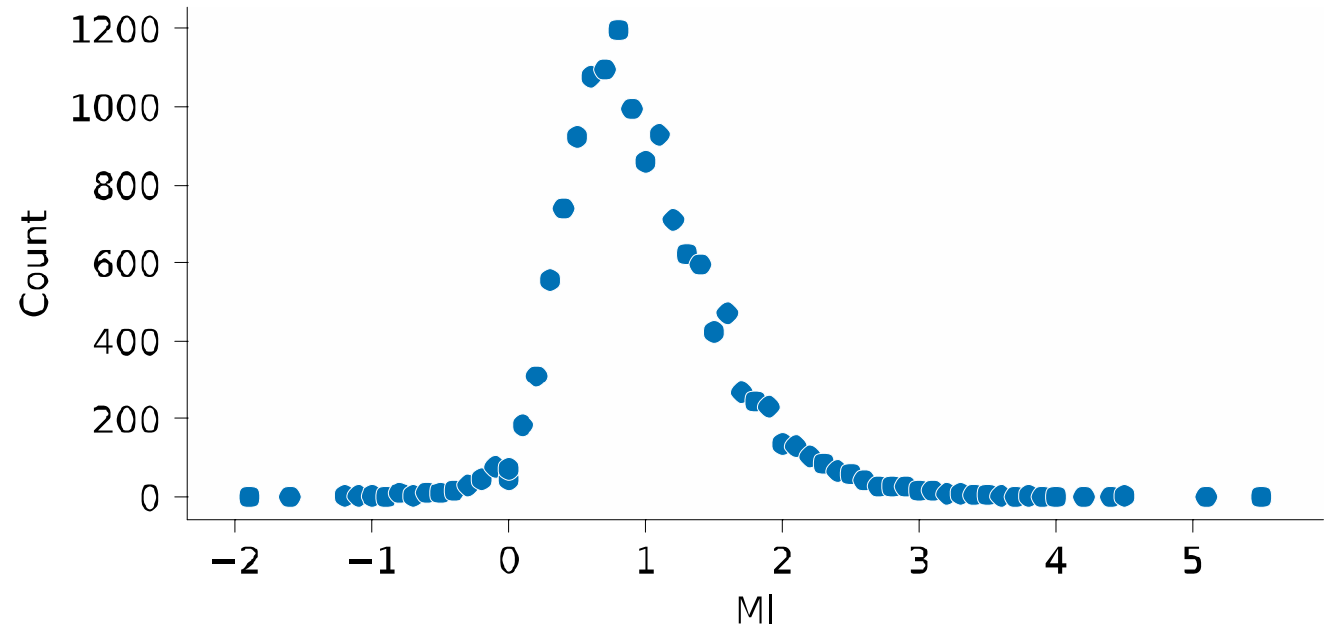
Last tuned >15yrs ago

Include more distant stations → better regional solutions

Trying to get less origins 😊



Antelope rt solutions with $ndef \geq 5$
counted in MI bins of 0.1
for the period 2018 – 2024 (~13500 events)



Recent activities

AHEAD

European Archive of Historical EArthquake Data

<https://www.emidius.eu/AHEAD/>

local MIDOP db @ ARSO

731 entries at this time

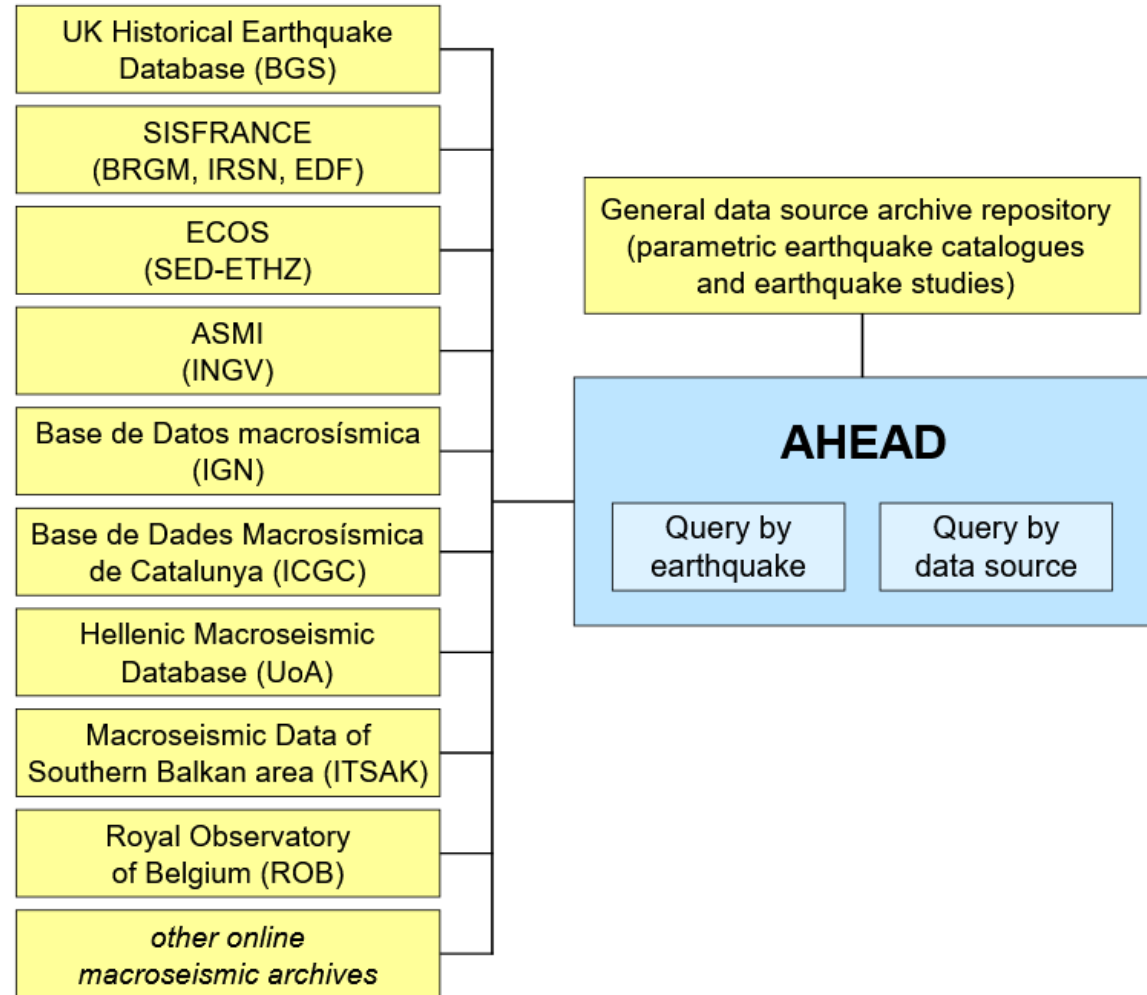


You may query the Archive

by Earthquake

by Data Source

with Web Services

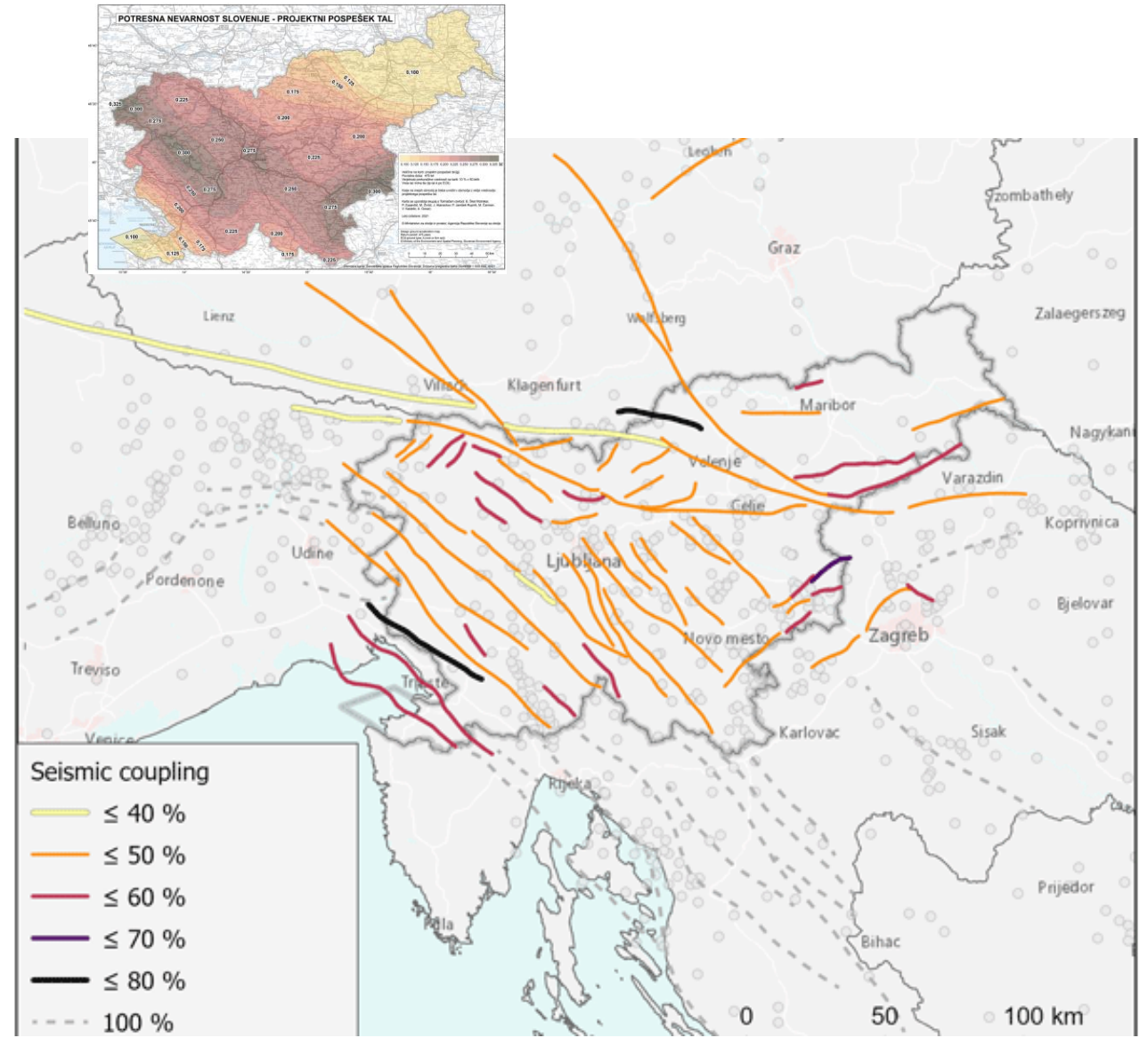


<https://nhess.copernicus.org/articles/24/651/2024/nhess-24-651-2024.html>

Natural Hazards and Earth System Sciences

Seismogenic depth and seismic coupling estimation in the transition zone between Alps, Dinarides and Pannonian Basin for the new Slovenian seismic hazard model

- assessment of the thickness of the lithosphere's section where earthquakes are generated
- assessment of the activity of each fault, expressed by its average displacement per year (slip rate)

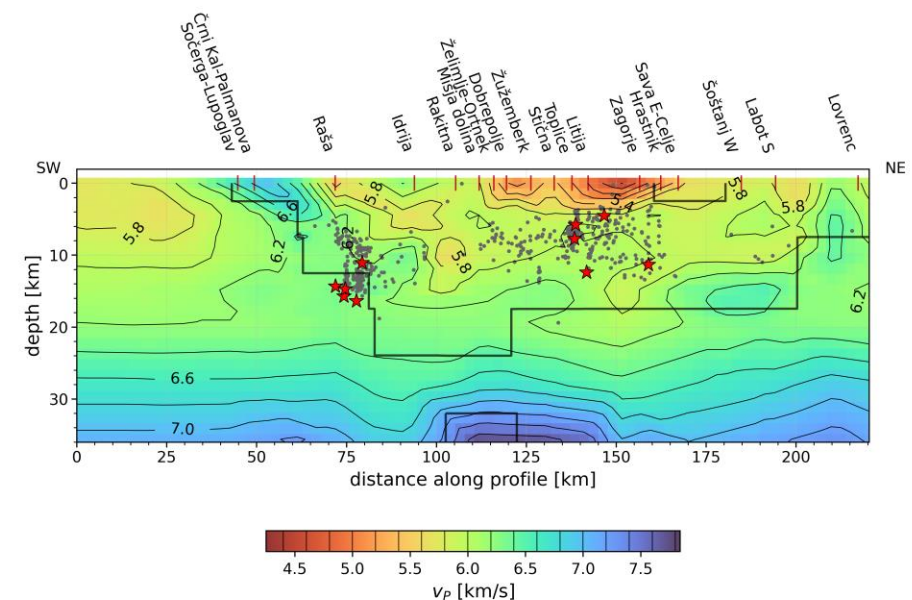
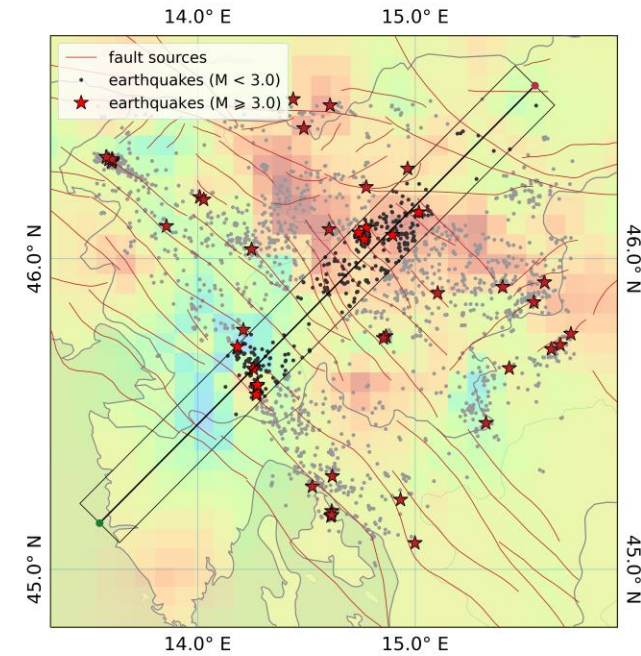


AGU Journal of Geophysical Research: Solid Earth

Investigations of the structure in the NW Dinarides using local earthquake tomography

Gregor Rajh, Josip Stipčević et al

- 3-D simultaneous hypocenter–velocity inversions with routinely picked arrival times of P- and S-waves
- 3-D P-velocity and v_P/v_S model successfully recovered at least up to a depth of 15 km

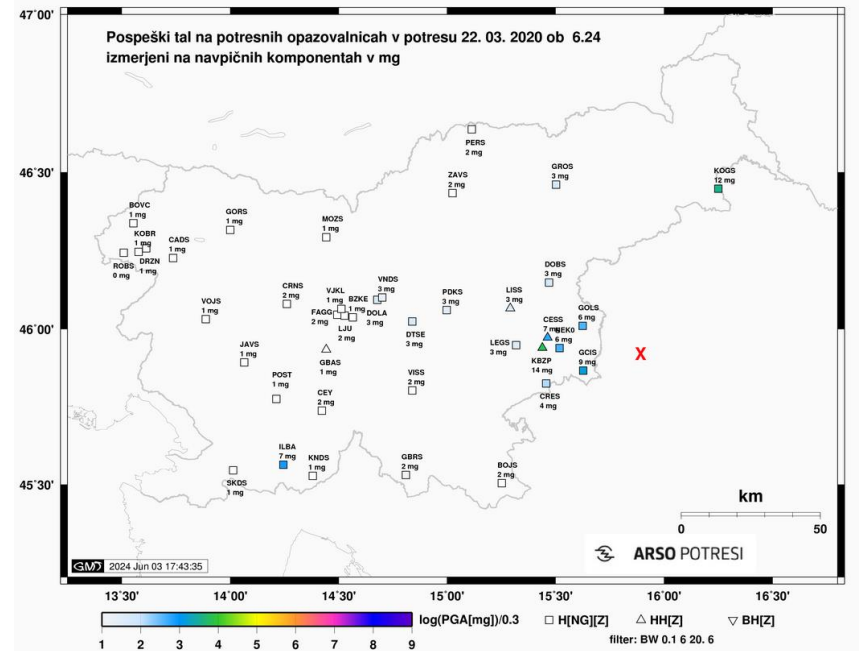
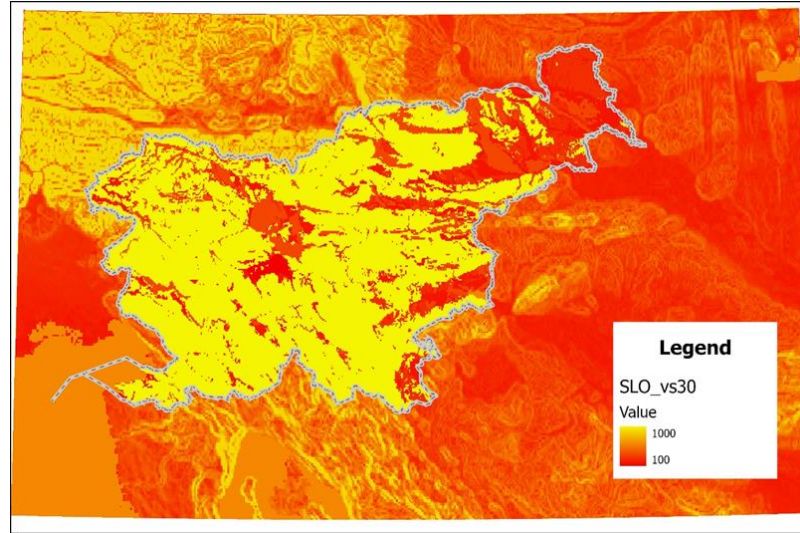
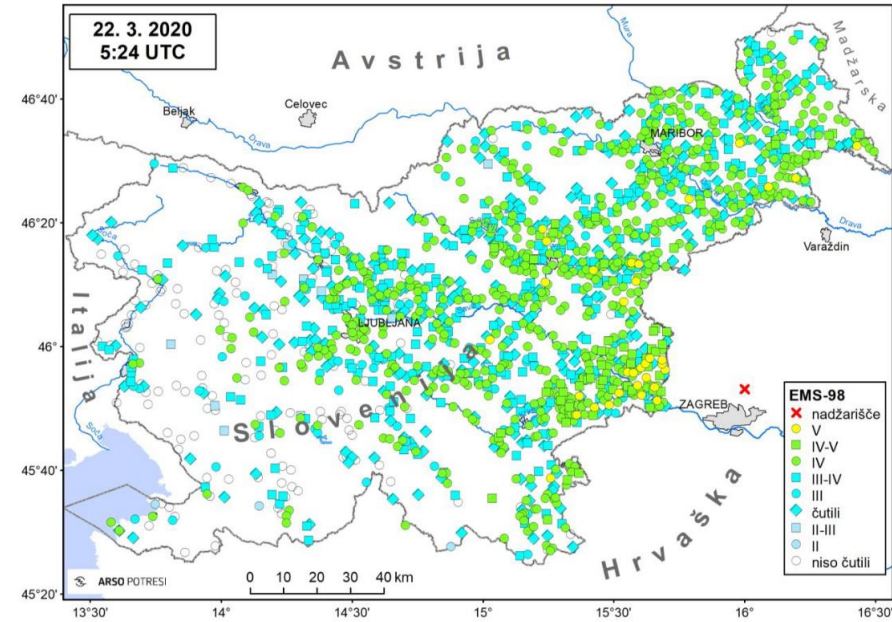


Recent activities

ShakeMap v4

Installation, learning, testing, data flow

Preparation of parameters, relations, grids...



GOAT-CASE

GA-OGS-ARSO Transfrontier CE₃RN
AdriaArray Seismicity Experiment

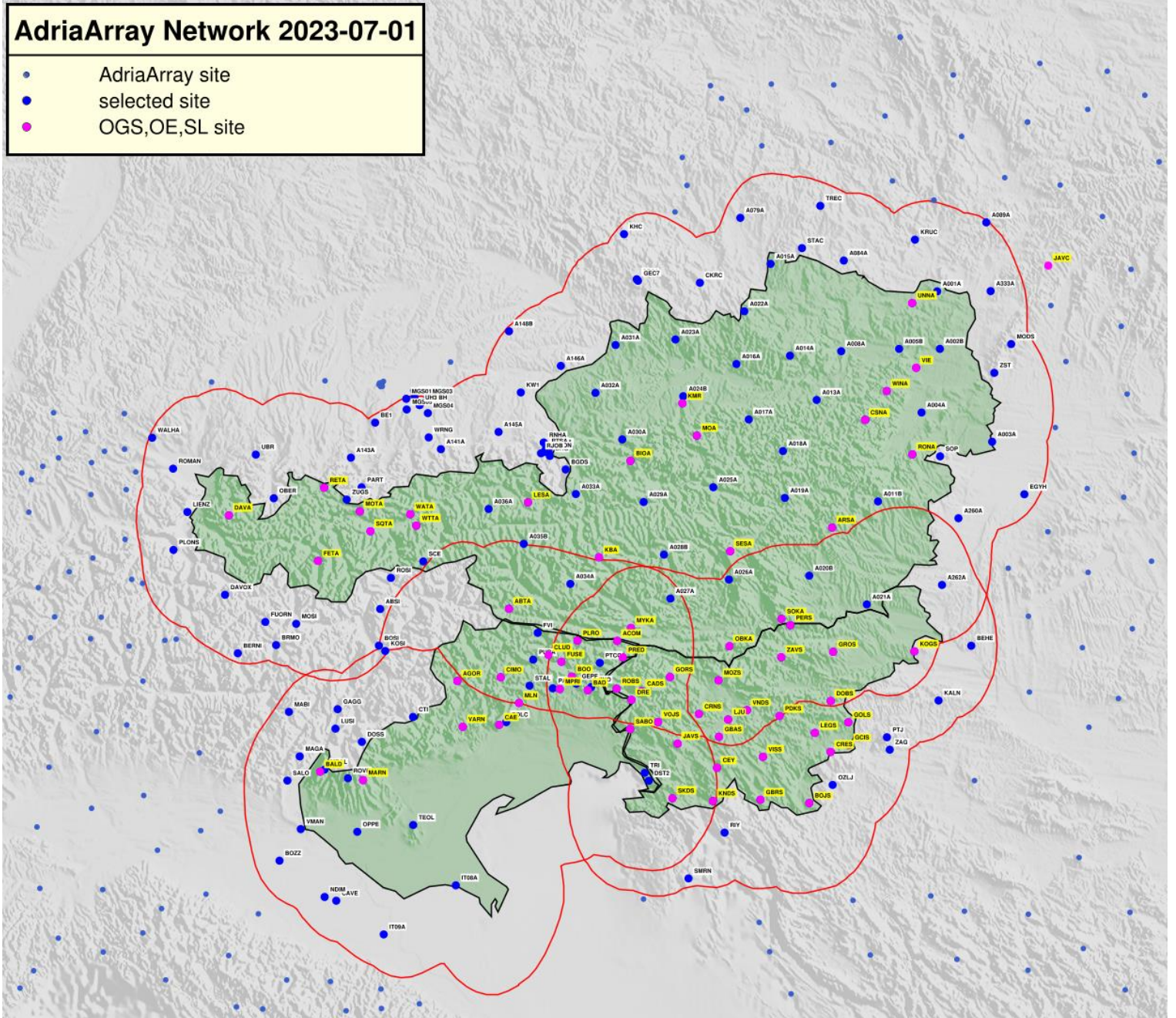
3-year project

Relocation of past events within large virtual network

Relocation of past events using AI tools

Sharing experience in RT system management

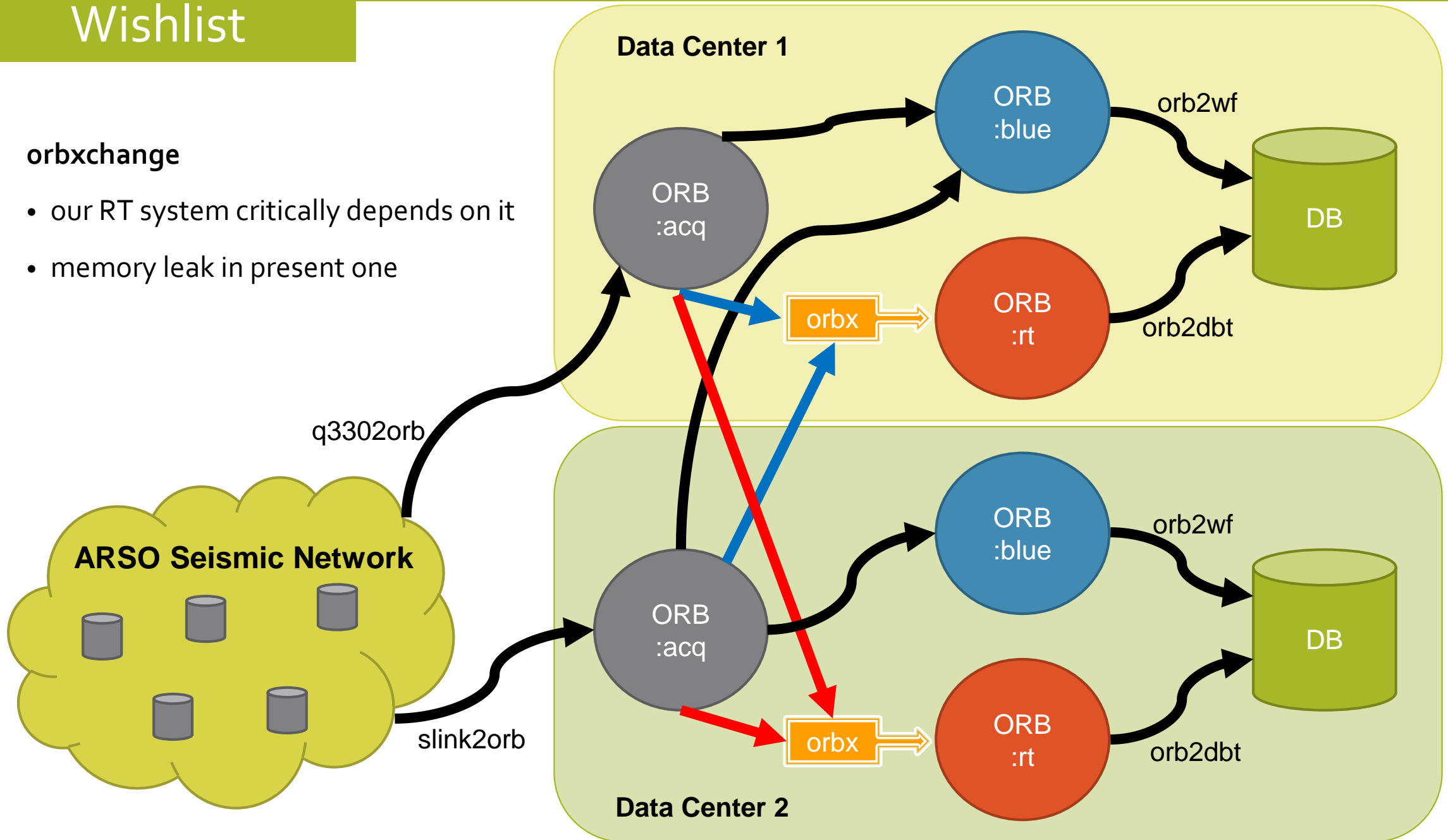
Establish a joint RT system



Wishlist

orbxchange

- our RT system critically depends on it
- memory leak in present one



Wishlist

db2stationxml (metadata exchange with ORFEUS, FDSN, ...)
→ has issues?!

stationxml2db

present procedure:

stationXML → stationxml-seed-converter-2.1.0.jar → seed2db → dbset ... → **dbmaster**

Future development → support for stationXML use in Antelope SW ?

Wishlist

AI tools for RT system and postprocessing

- learning procedures

rtexec capability for automatically killing/restarting processes that use excessive resources

Native Antelope **seedlink tools** / maintain compatibility with contrib SW

- We exchange more data with seedlink than with orbzorb

- Present solution: IRIS ringserver - orbzringserver - slinkzorb



Seizmovitez Jurij Pahor, član Abrahamovega reda, jezdec antilope.