

Advancement through Innovation

www.kinemetrix.com

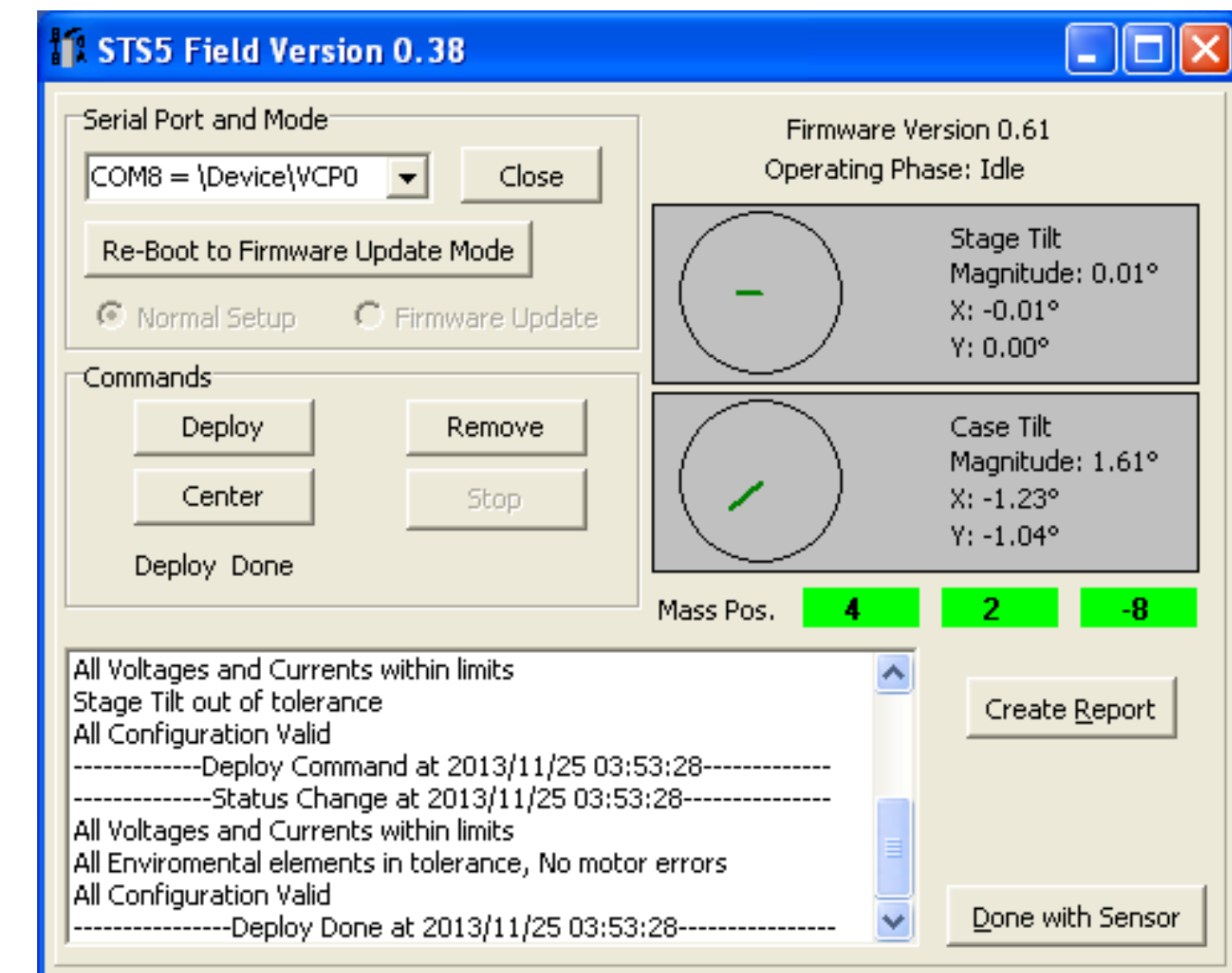
STS-5A

The world's highest performance borehole sensor



STS-5A

- Same modules and electronics as STS-2.5
- Tilt range: can be leveled from $\pm 5^\circ$ in any direction
- Used by USArray/TA in Alaska (over 70% of sensors)
- Motorized Gimbal with Graphic Visualization:



STS-6A

- The best seismometer ever built!
- The next GSN seismometer, with 50 units already delivered to USGS
- Based on STS-5A, adding:
- Wider frequency band: 360 s – 50 Hz
- Lower self noise at very long periods
- Lower sensitivity to barometric changes
- Magnetic shielding for installations at high latitudes (susceptibility $< 0.08 \text{ m/s}^2/\text{T}$)



Holelocks for STS-5A and STS-6A



Dual Lock

- Purely mechanical, inherently failsafe: unlocking by pulling up the sensor
- Clamping and alignment with borehole work up to 5° tilt in any direction
- Casing ID: 6.50" to 7.25"
- Installable at any depth
- 2 sensors can be installed in the same borehole

Top Lock

- For installations on compacted media or on customer supplied "bishop's hat" holelock using Kinometrics supplied adapter
- "Slim package" available for casing ID 6.00" to 6.35"

Headquarters, Corporate, Kinematics, Pasadena, California – USA
Headquarters, Quanterra, Harvard, Massachusetts – USA
Headquarters, Metrozet, Los Angeles, California – USA
Headquarters, BRTT, Boulder, Colorado – USA
Network Operation, Denver, Colorado – USA

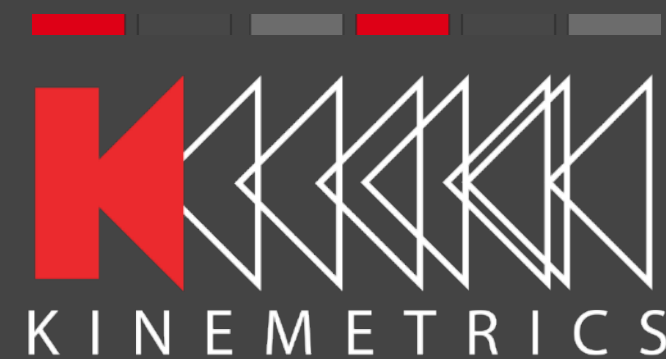
Headquarters, Streckeisen, Pfungen – Switzerland
Office in Switzerland
Training Center, Vienna – Austria
Network Operation, Italy

Office in Japan

Office in Abu Dhabi
Network Operation, Abu Dhabi
Network Operation, Saudi Arabia

Network of over 60
representatives worldwide

THANK YOU



Address

Kinematics
222 Vista Avenue
Pasadena, CA 91107

Phone & Fax

Direct Line: +1-626-795-2220
Fax: +1-626-795-0868
sales@kmi.com

Social Media

facebook.com/osskinematics
twitter.com/osskinematics
linkedin.com/company/kinematics