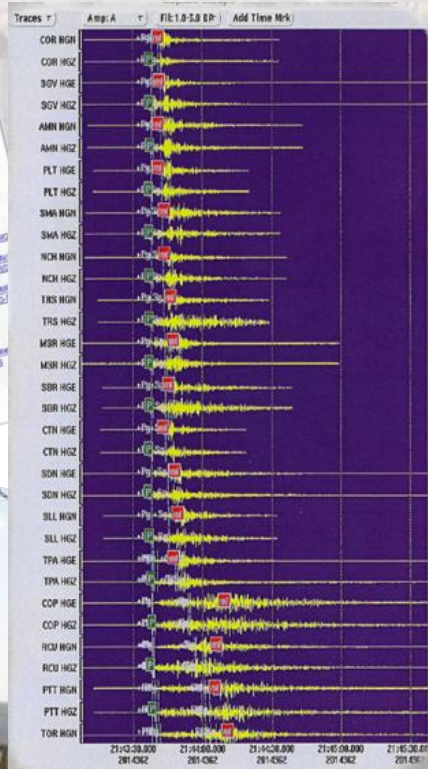
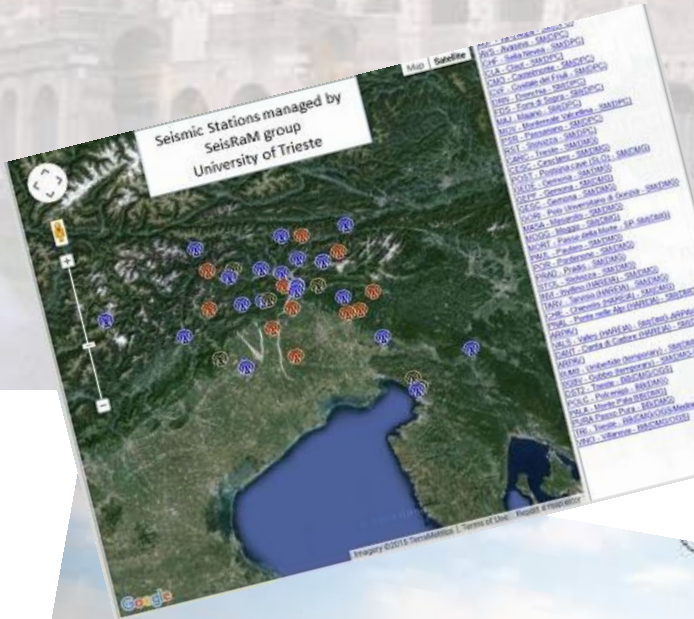


Roma 18-20 May 2016

Antelope User Group Meeting



Organized by:
[Seismological Research and Monitoring Group](#)
[Dep. of Mathematics and Geosciences](#)
[University of Trieste](#)

via E.Weiss 2, Trieste -Italy

Hosted by:

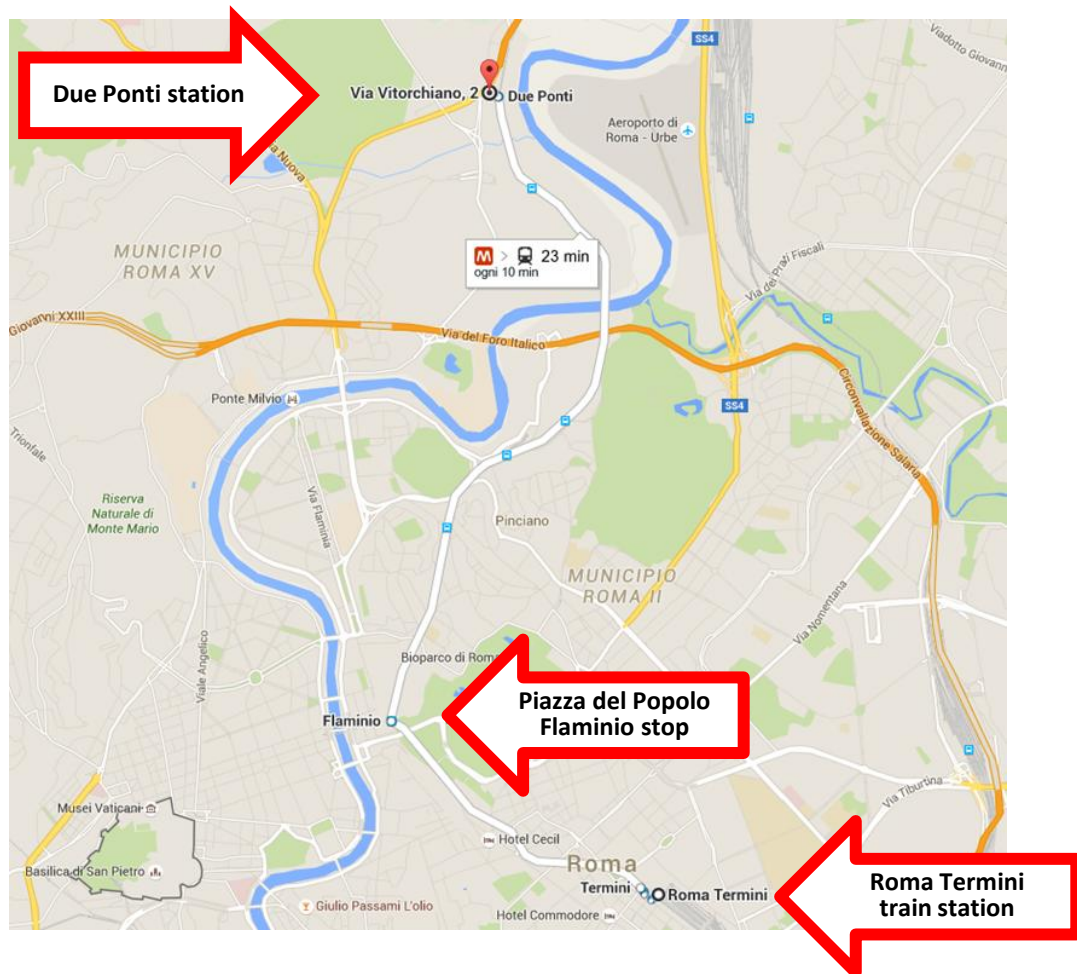
[Presidenza Consiglio dei Ministri](#)
[Dipartimento di Protezione Civile](#)

via Vitorchiano 2, Rome – Italy.

SeisRaM

Seismological Research and Monitoring Group
Dep. Mathematics and Geosciences
University of Trieste



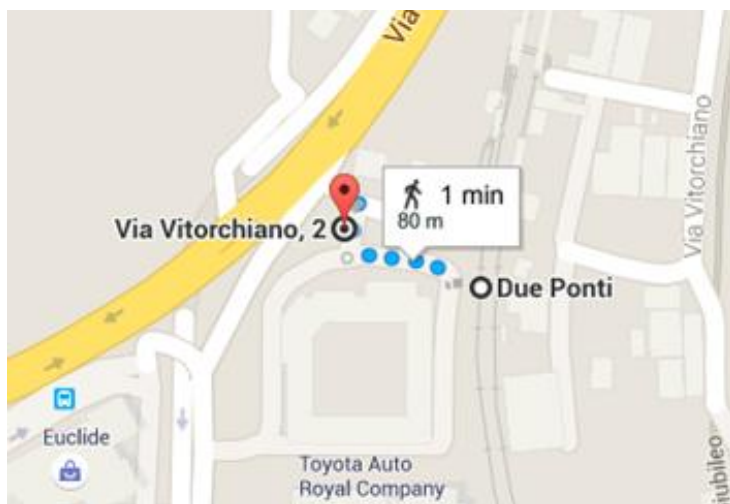


From Roma Termini train station to Piazza del Popolo

Take metro A (Anagnina – Battistini), Battistini direction, to Flaminio-Piazza del Popolo station -7 minutes journey - 4 stops, until Flaminio

From Piazza del Popolo to via Vitorchiano

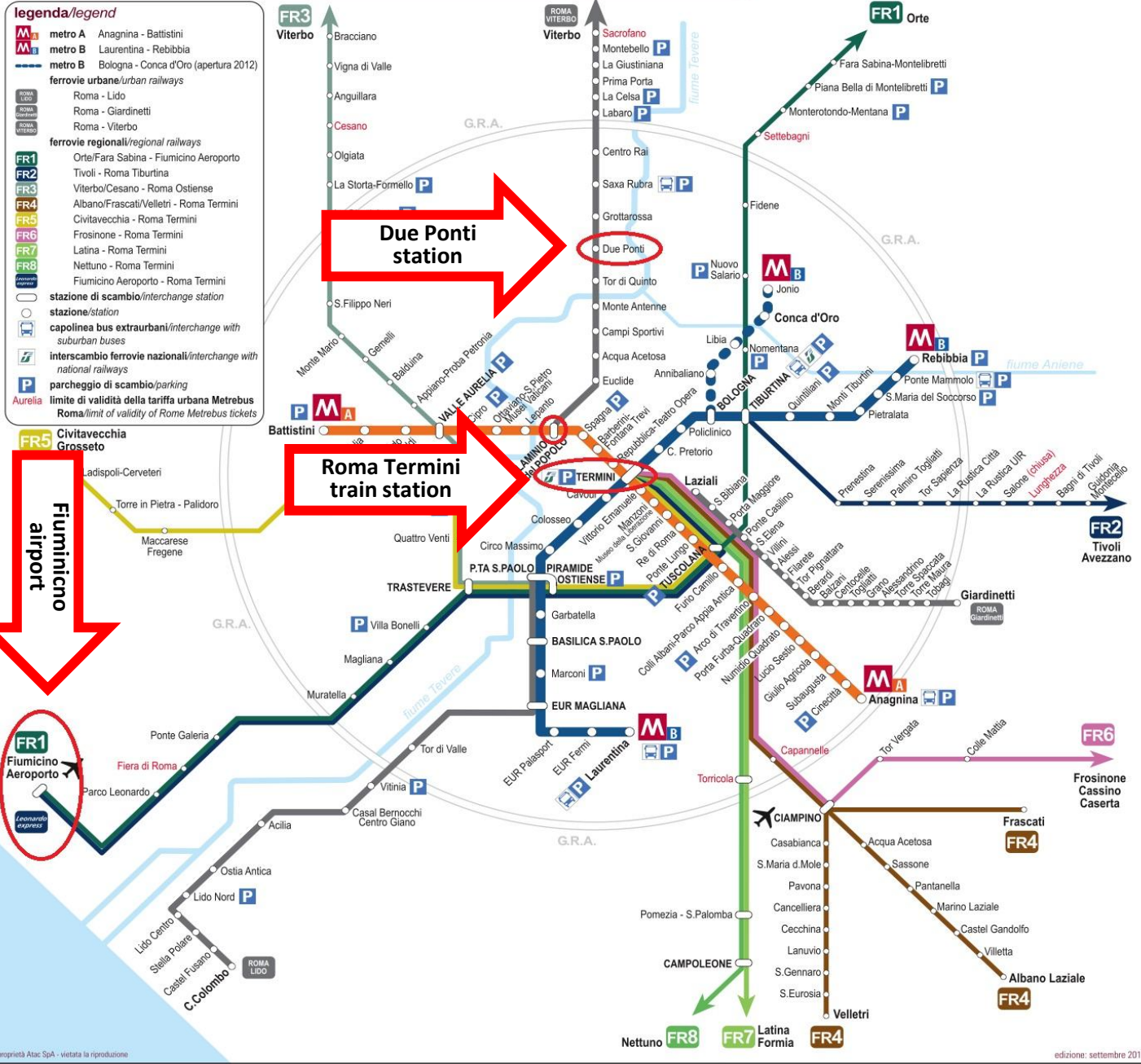
Take urban train Roma-Viterbo, Viterbo direction, to Due Ponti station - 10 minutes journey - 5 stops, until Due Ponti



Reach the Department by foot

metro e ferrovie metropolitane / metro and city railways

- legenda/legend**
- metro A Anagnina - Battistini
 - metro B Laurentina - Rebibbia
 - metro B Bologna - Conca d'Oro (apertura 2012)
 - ferrovie urbane/urban railways
 - Roma - Lido
 - Roma - Giardinetti
 - Roma - Viterbo
 - ferrovie regionali/regional railways
 - FR1 Orte/Fara Sabina - Fiumicino Aeroporto
 - FR2 Tivoli - Roma Tiburtina
 - FR3 Viterbo/Cesano - Roma Ostiense
 - FR4 Albano/Frascati/Velletri - Roma Termini
 - FR5 Civitavecchia - Roma Termini
 - FR6 Frosinone - Roma Termini
 - FR7 Latina - Roma Termini
 - FR8 Nettuno - Roma Termini
 - Fiumicino Aeroporto - Roma Termini
 - stazione di scambio/interchange station
 - stazione/station
 - capolinea bus extraurbani/interchange with suburban buses
 - interscambio ferrovie nazionali/interchange with national railways
 - parcheggio di scambio/parking
 - Aurelia
 - limite di validità della tariffa urbana Metrebus Roma/limit of validity of Rome Metrebus tickets



More info about Roma transport at
<http://www.atac.roma.it/index.asp?lingua=ENG> and
<http://www.agenziamobilita.roma.it/en.html>