

Earthquake Monitoring Center

مركز رصد الزلازل



Sultan Qaboos University

جامعة السلطان قابوس

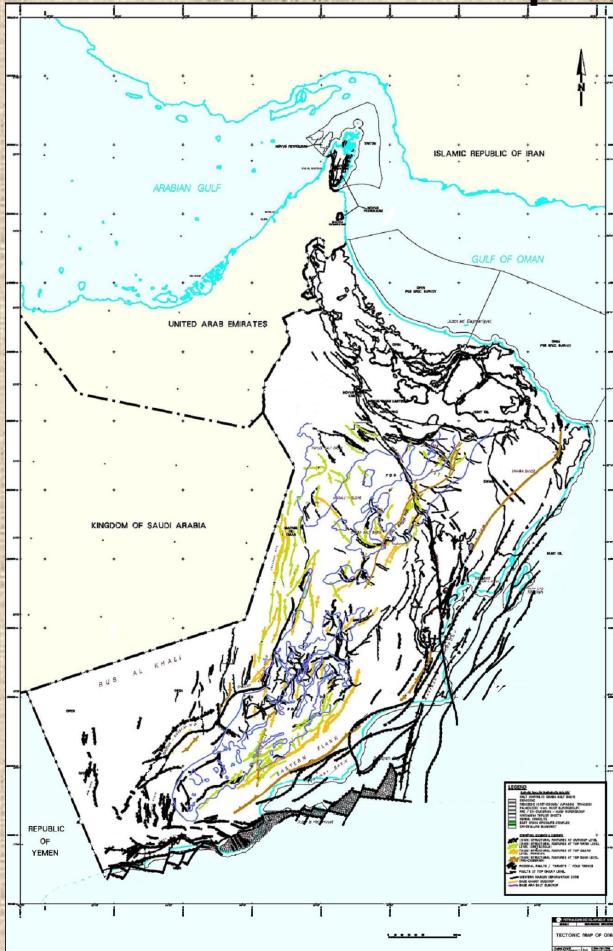
OMAN SEISMOLOGICAL NETWORK

Outline

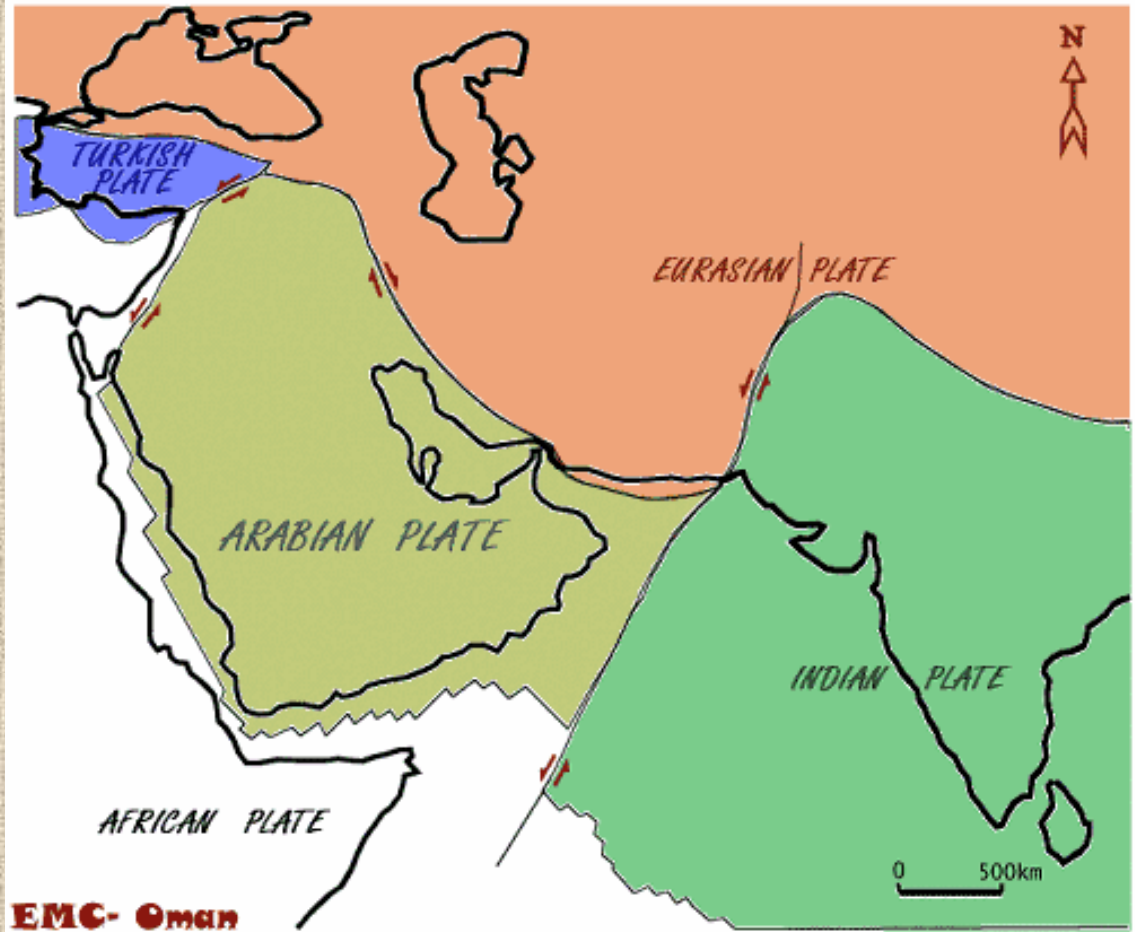
- Objectives
- The Earthquake Monitoring Center (EMC)
- Remote Stations
- Communication and system analysis
- Seismic record
- New Projects

Seismic Activity

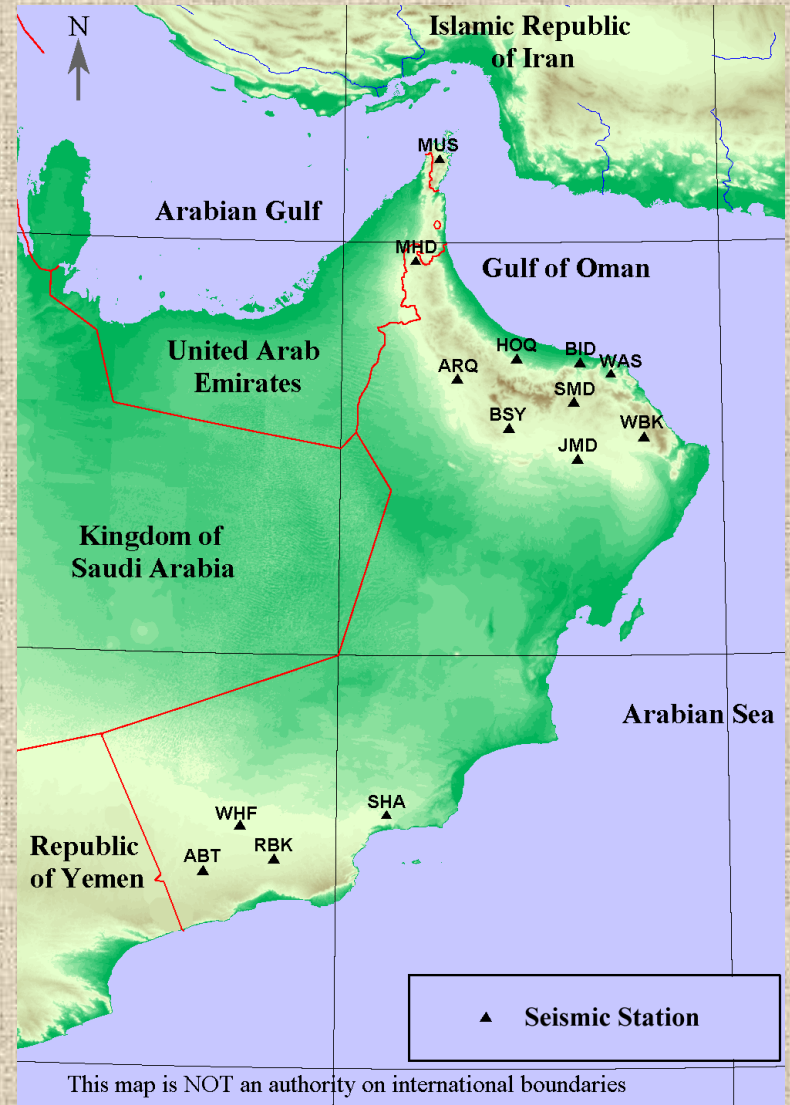
Internal Tectonics Map



Regional Tectonics

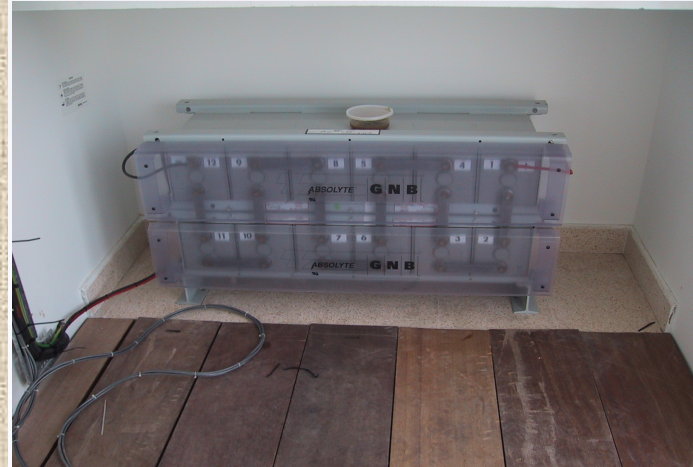


EMC



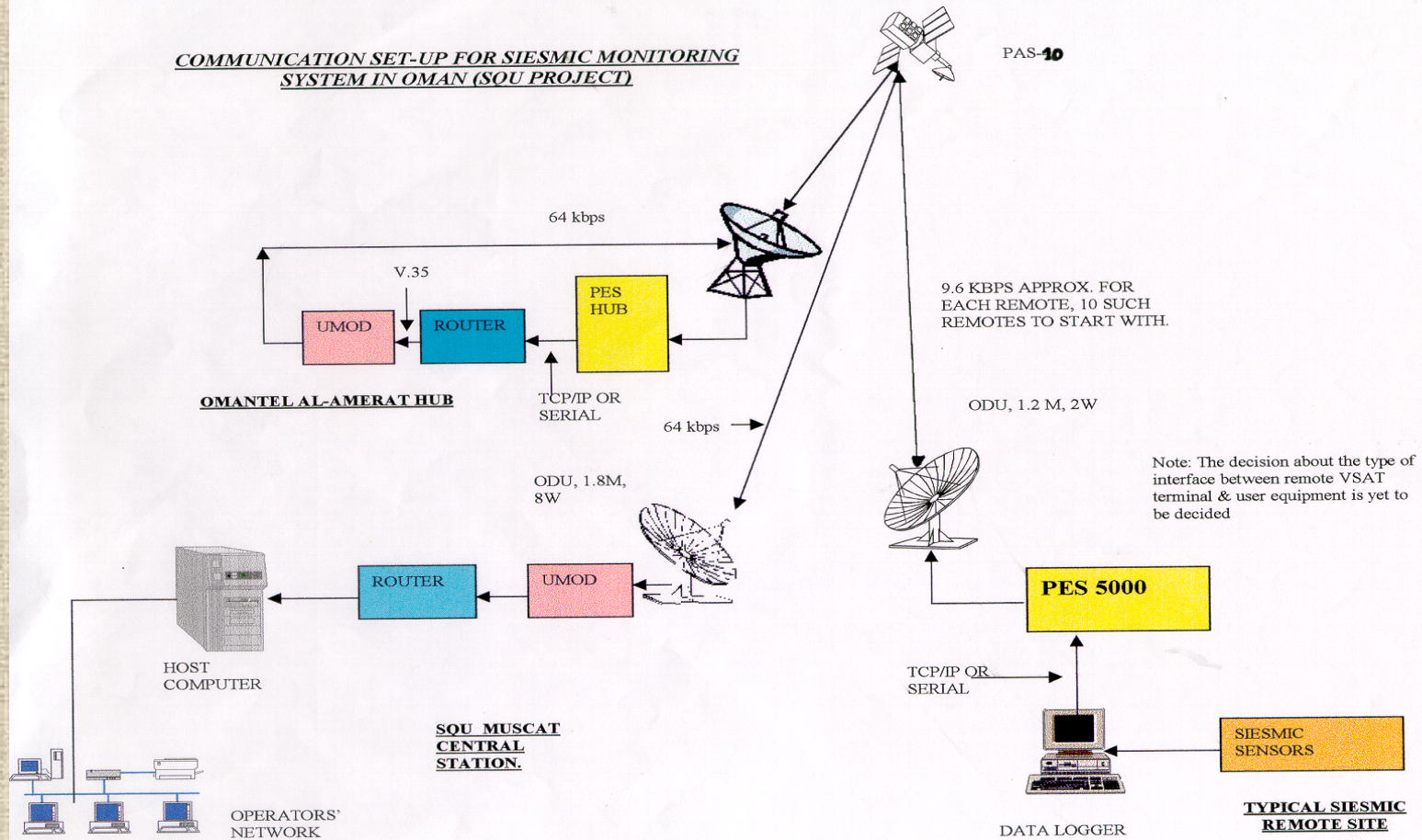
- ❖ (1) central data acquisition system (CDAS) at Sultan Qaboos Uni.
- ❖ (10) stations with (3) short –period seismic sensors (SS-1) & data logger (Q730BL).
- ❖ 3 stations with broadband sensors (STS-2) & data logger (Q330).
- ❖ GPS antenna
- ❖ VSAT system
- ❖ (12) Solar panel.

Remote Stations

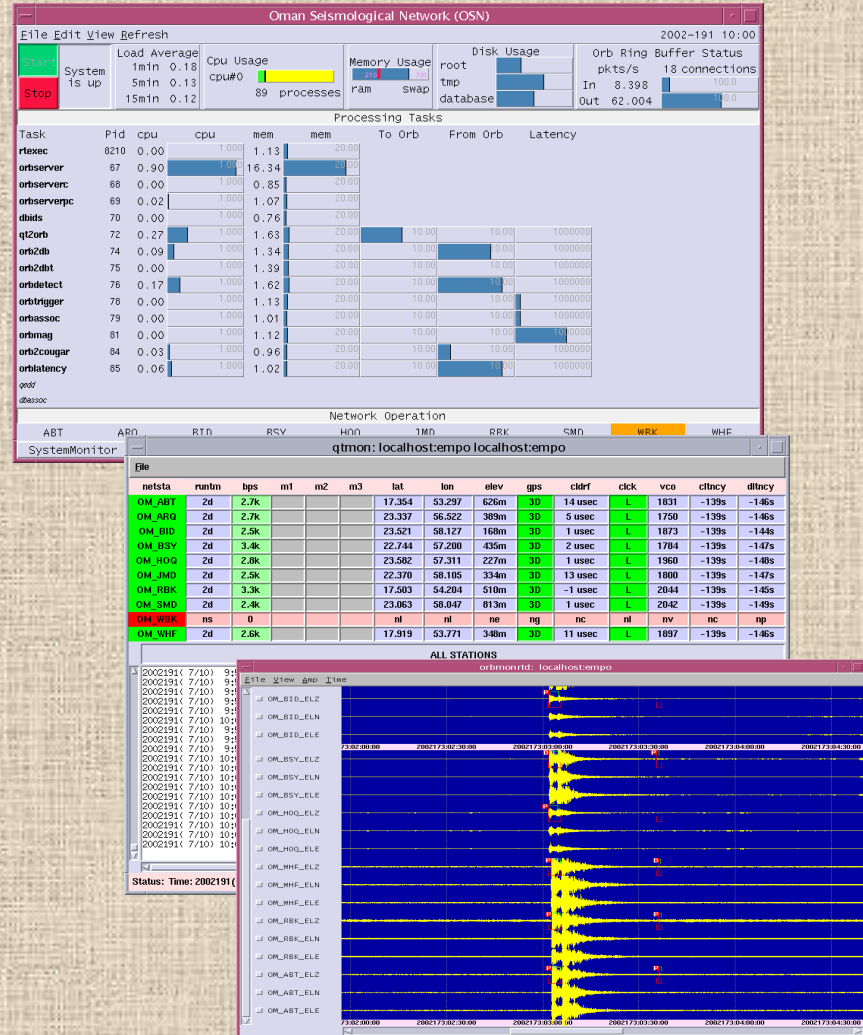
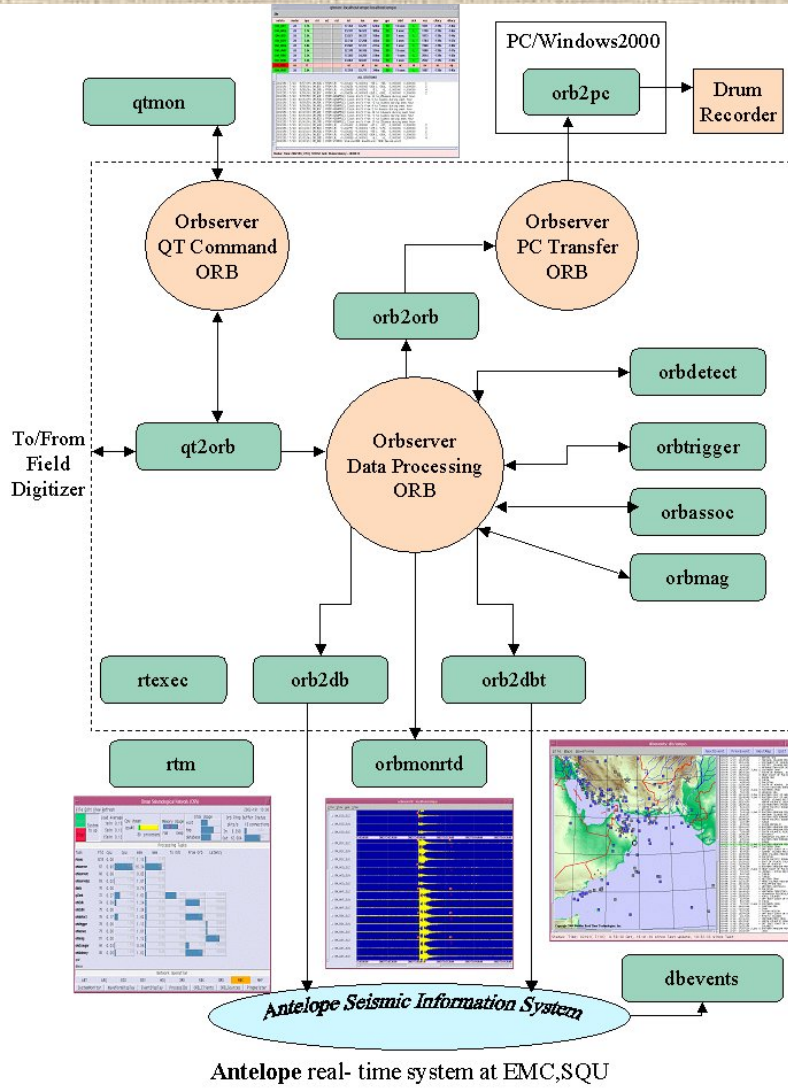


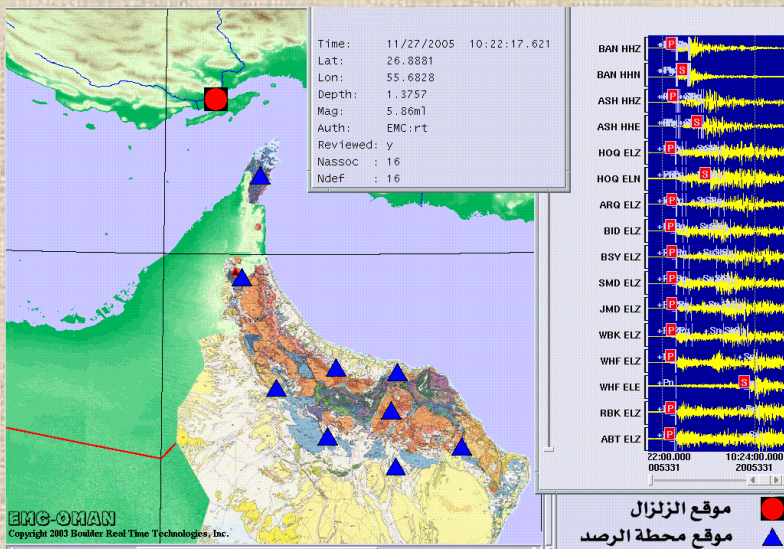
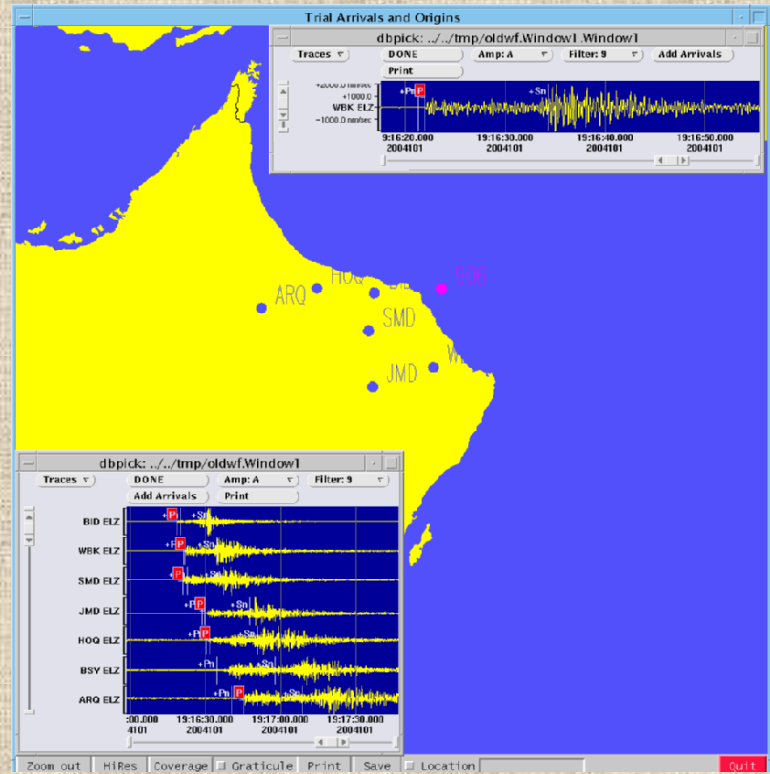
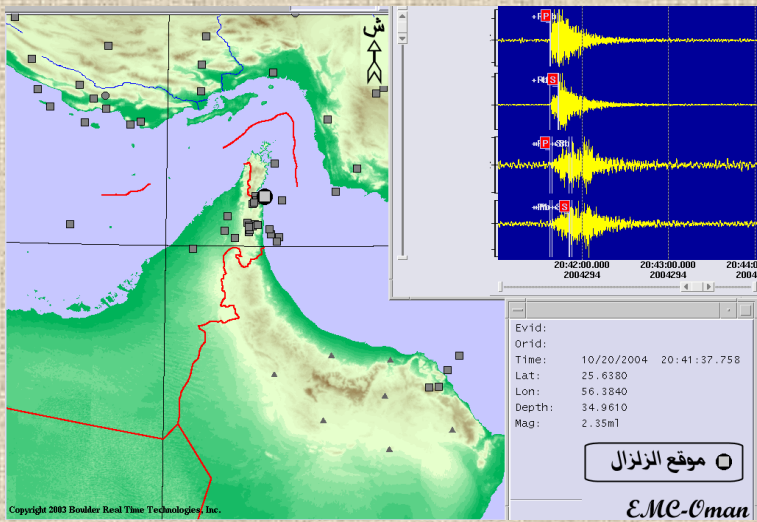


VSAT Communication

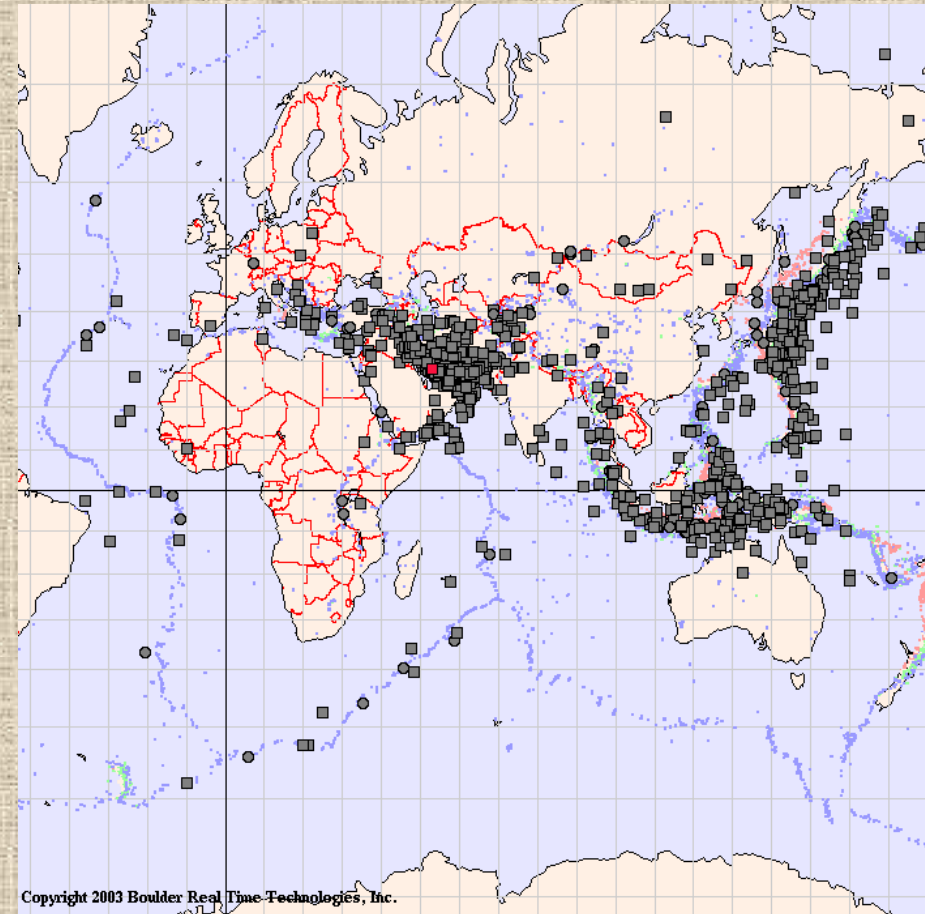
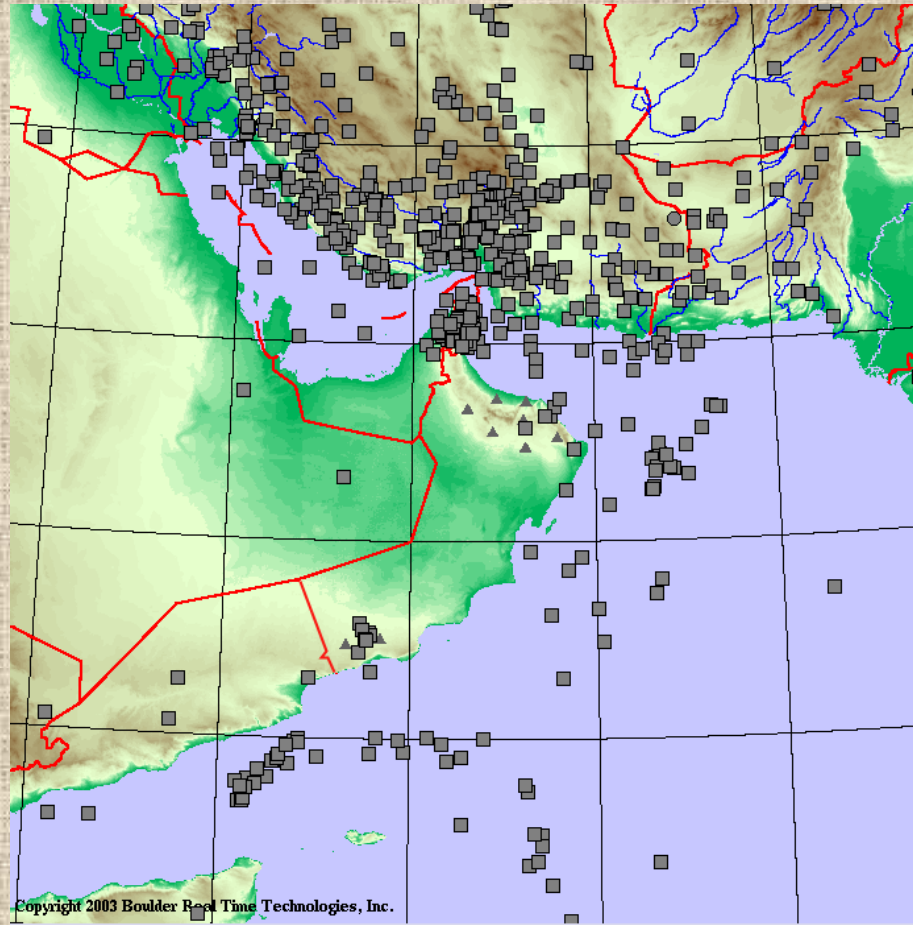


Antelope



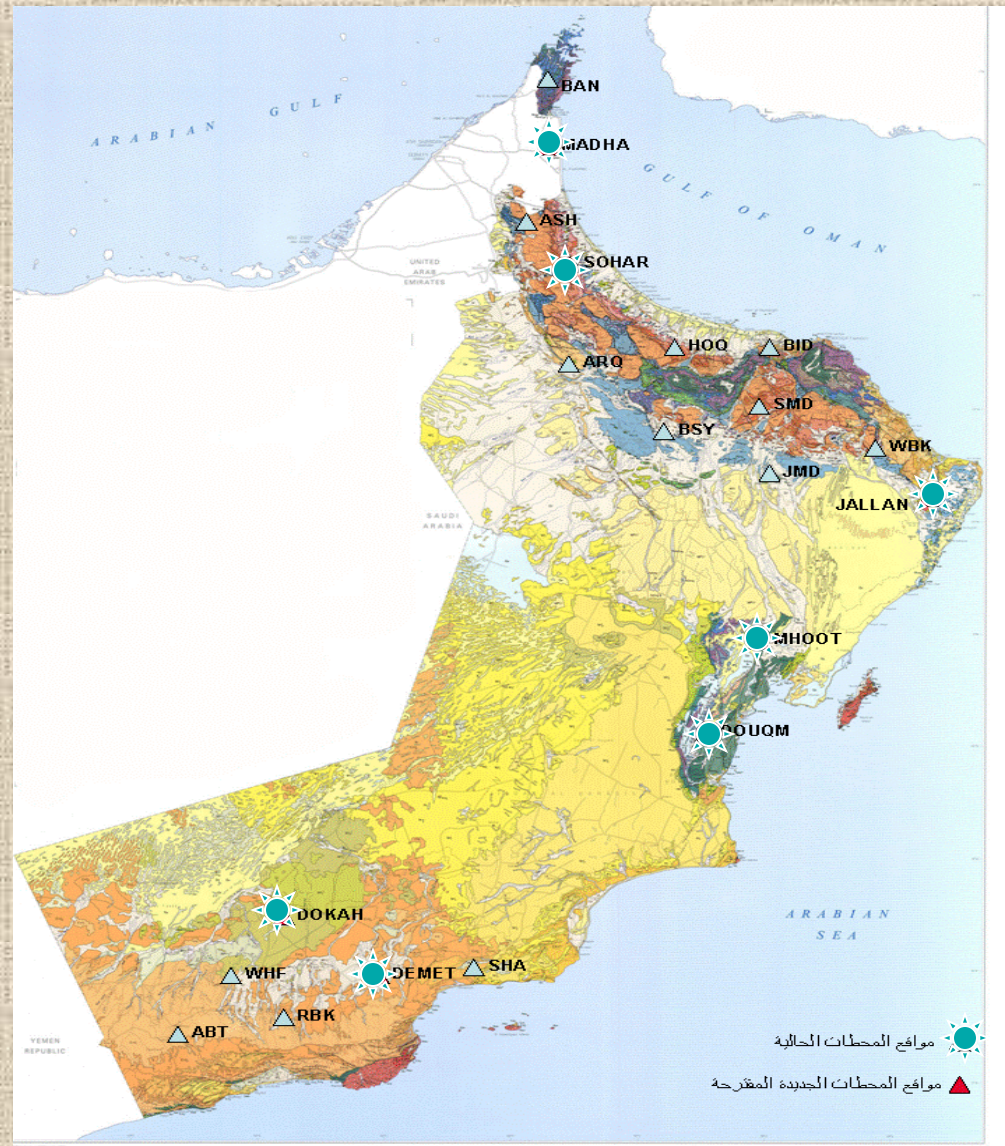


Seismic Activity



Network Expansion

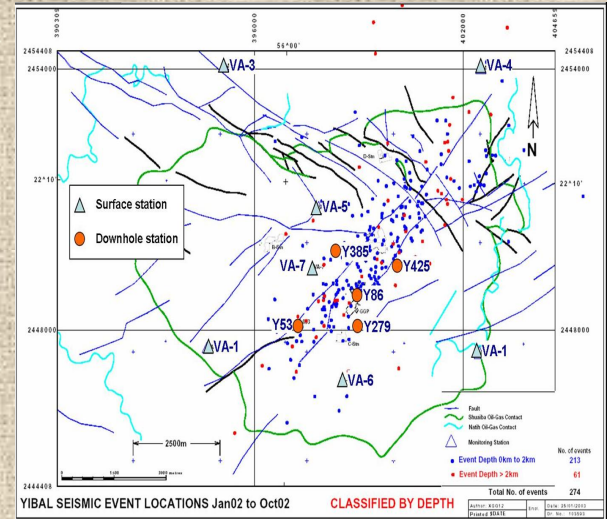
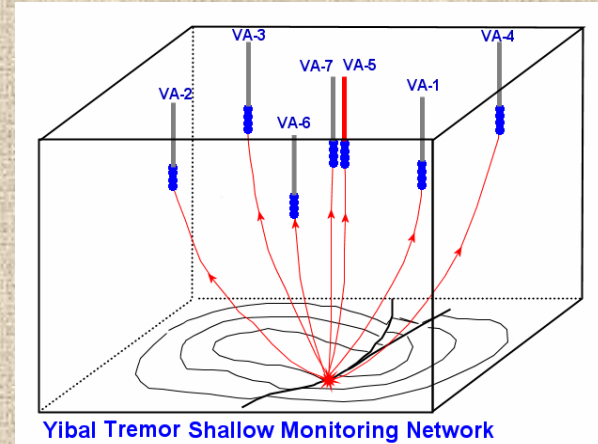
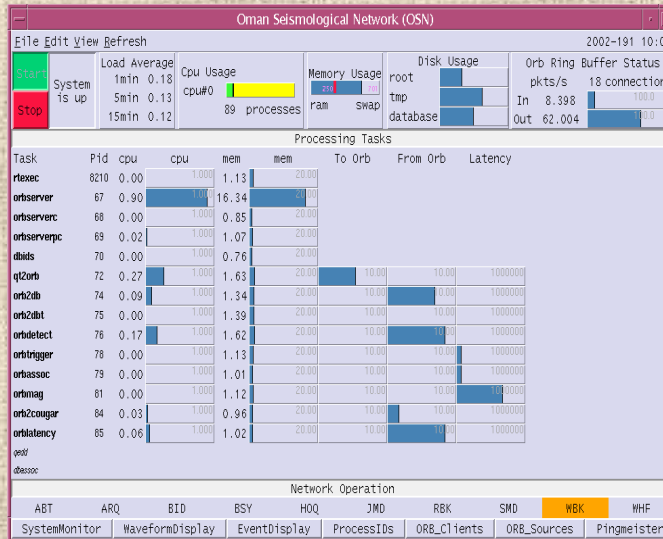
➤ (7) new broadband stations



Microseismic Study of Yibal Oil Field



Offline Data



QUESTIONS

?!

