

Centre de Recherche en Astronomie Astrophysique et Géophysique

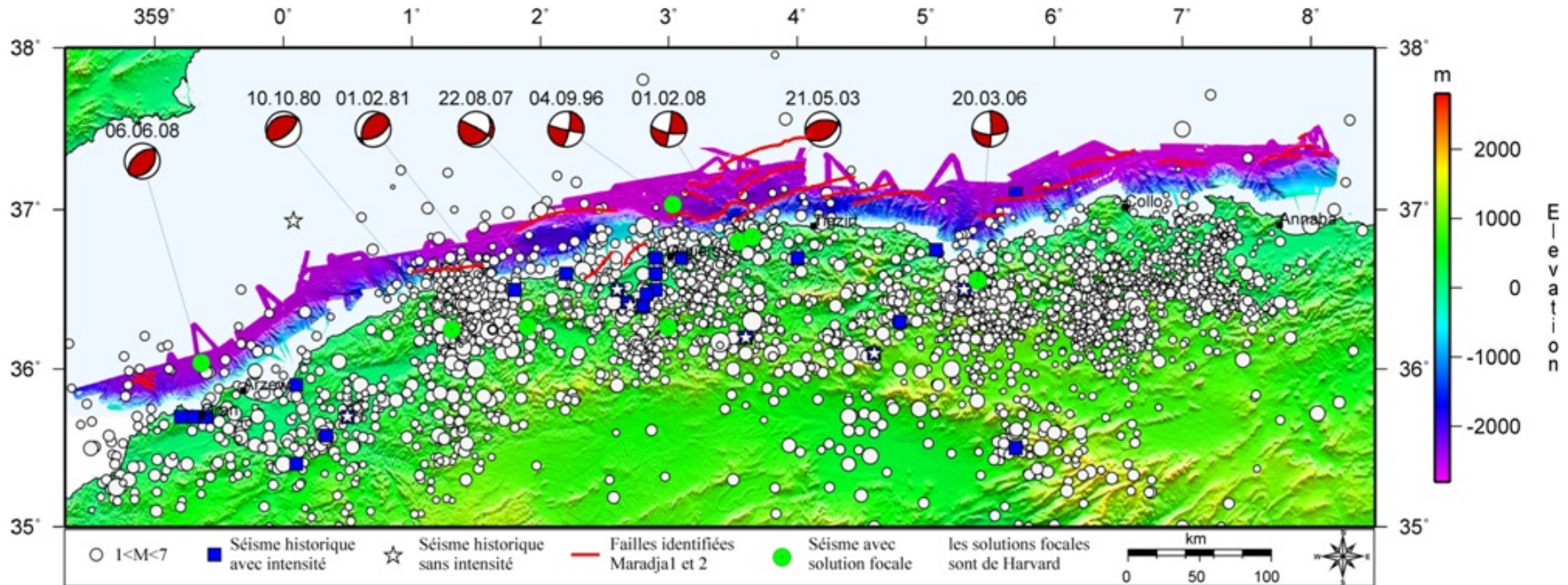
CRAAG

The New Algerian Digital Seismic Network

State and future development

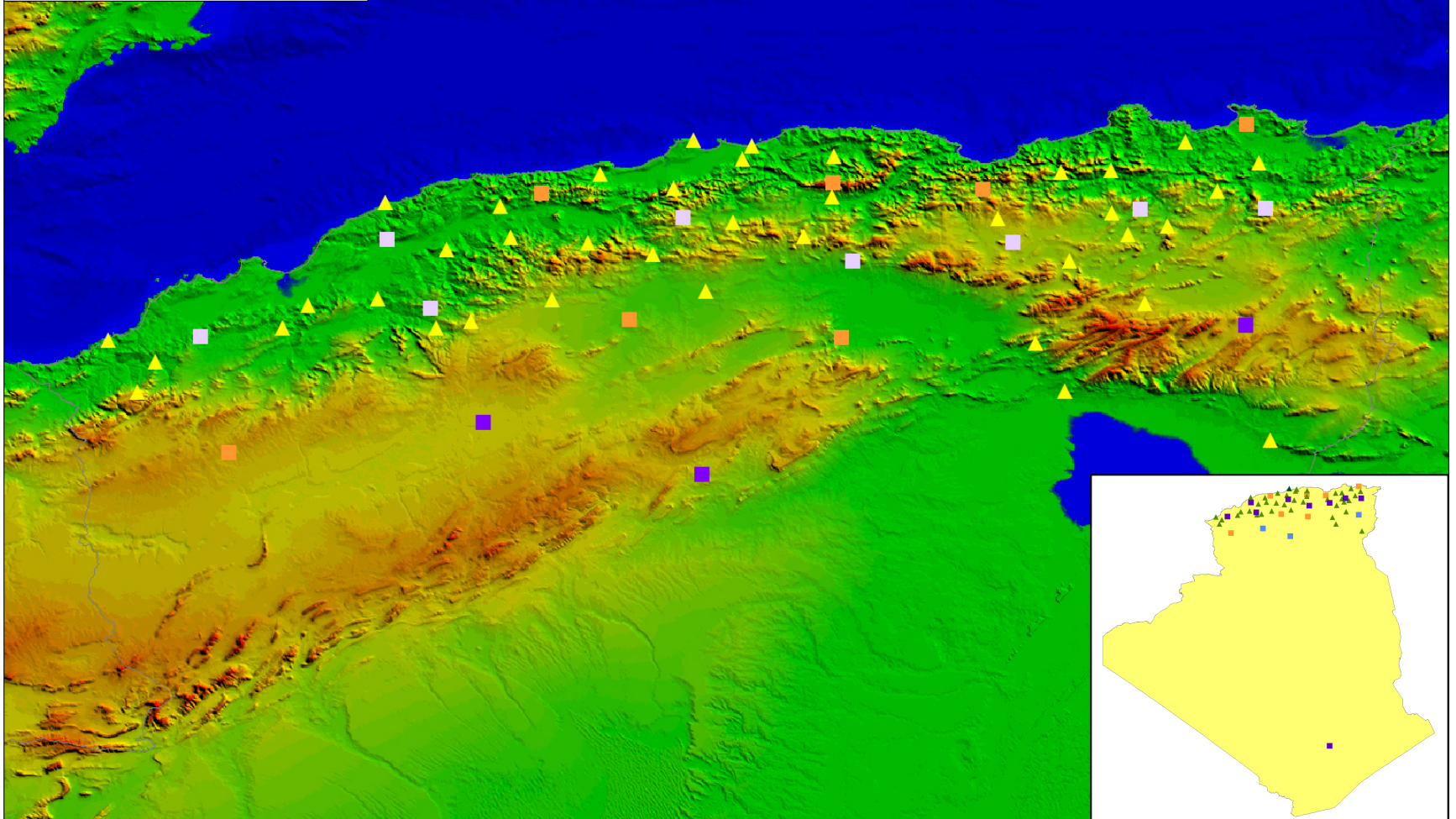
T.ALLILI, A.KHERROUBI
CRAAG

Seismicity of Algeria (1365 – June 2008) from Algerian catalog



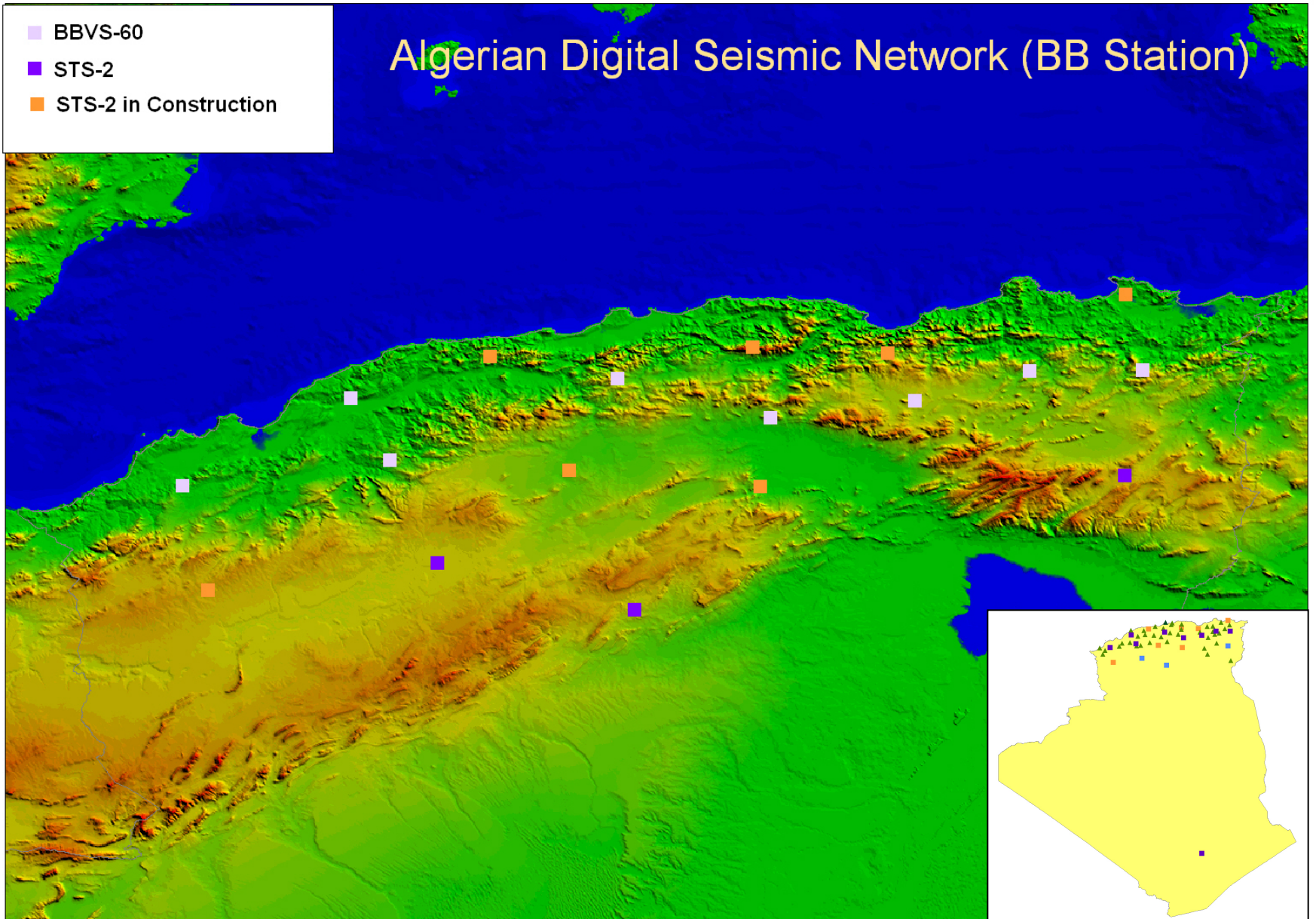
Algerian Digital Seismic Network (ADSN)

- BBVS-60
- ▲ SS-1
- STS-2
- STS-2 in Construction



Algerian Digital Seismic Network (BB Station)

- BBVS-60
- STS-2
- STS-2 in Construction



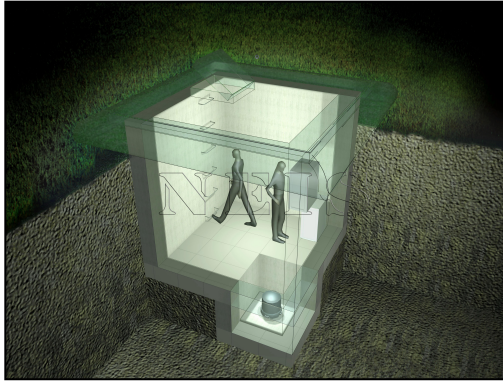
- ❑ **(08) BB stations and (02) VBB stations**
 - Sensor BBVS-60 and BBVS-120
 - Digitizer EDAS-24IP 6 channels

- ❑ **50 new digital stations**
 - ✓ **(10) new Broad Band Stations**
 - Sensor STS-2
 - Digitizer Q-330 6 channels

 - ✓ **(40) Short Period**
 - Sensor SS-1
 - Digitizer Q-330 6 channels

 - ✓ **(22) Episensor**
 - Sensor : (20) ES-T and (02) BBAS-2
 - Digitizer: (20) Q-330 6 channels and (02) EDAS-24IP

- ❑ **Central of data Management with a Real-Time processing (Antelope System 4.10).**



Site model



BB Stations in operation



VBB Stations in operation



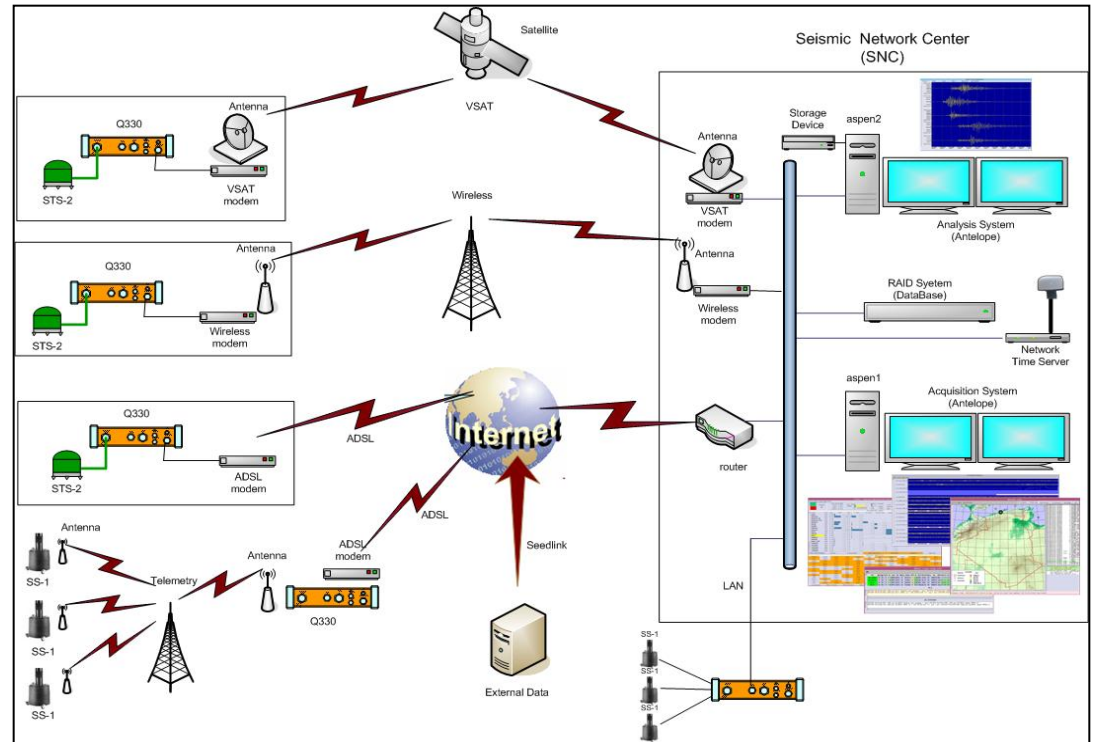
SP Stations in operation



DC Power (Solar Panel)

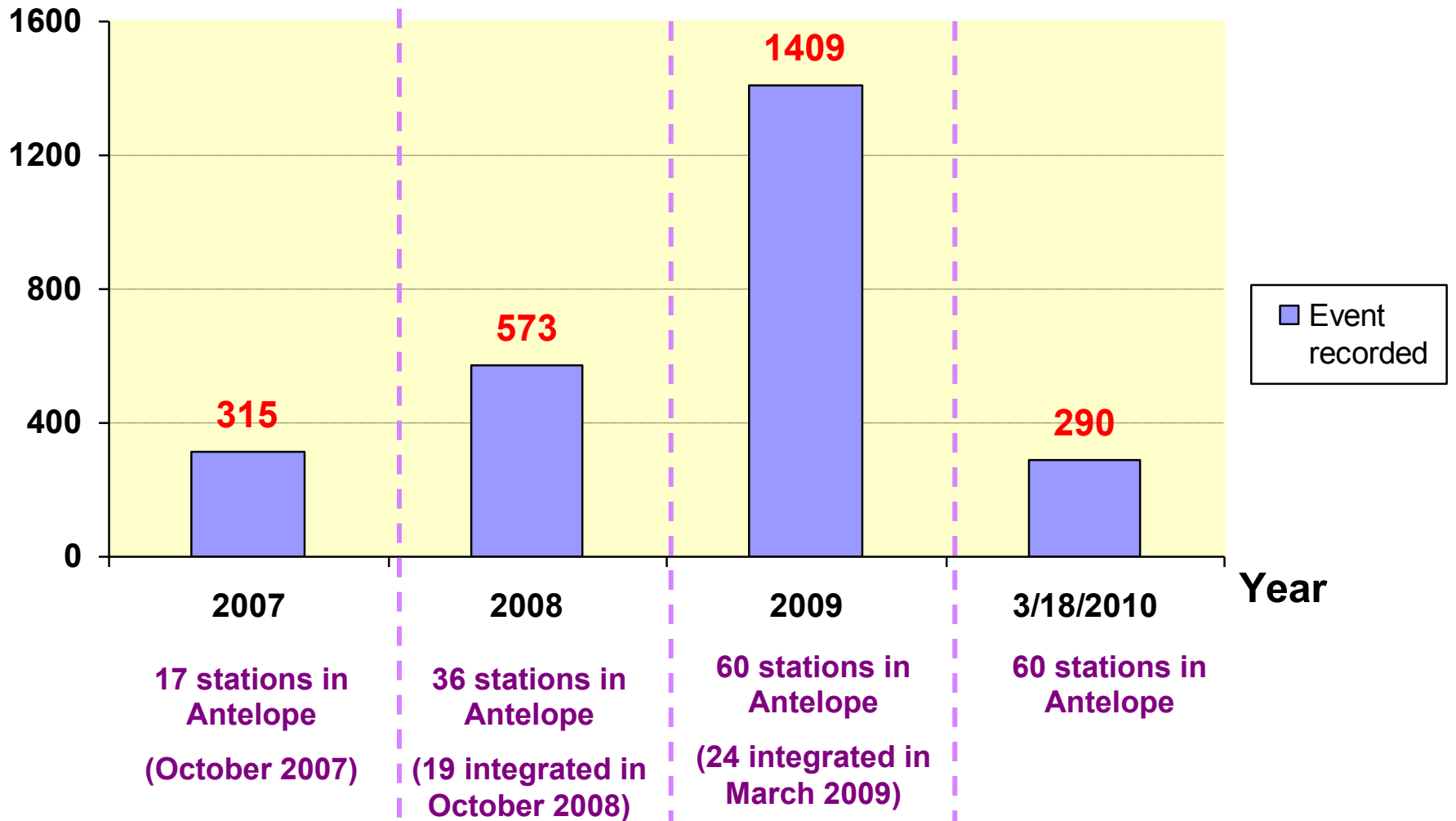
Communication :

- **VSAT** : **10** Stations
- **GSM/EDGE** : **40** Stations
- **ADSL** : **01** Station
- **Slink2orb** : **08** Stations
- **orb2orb** : **01** Stations

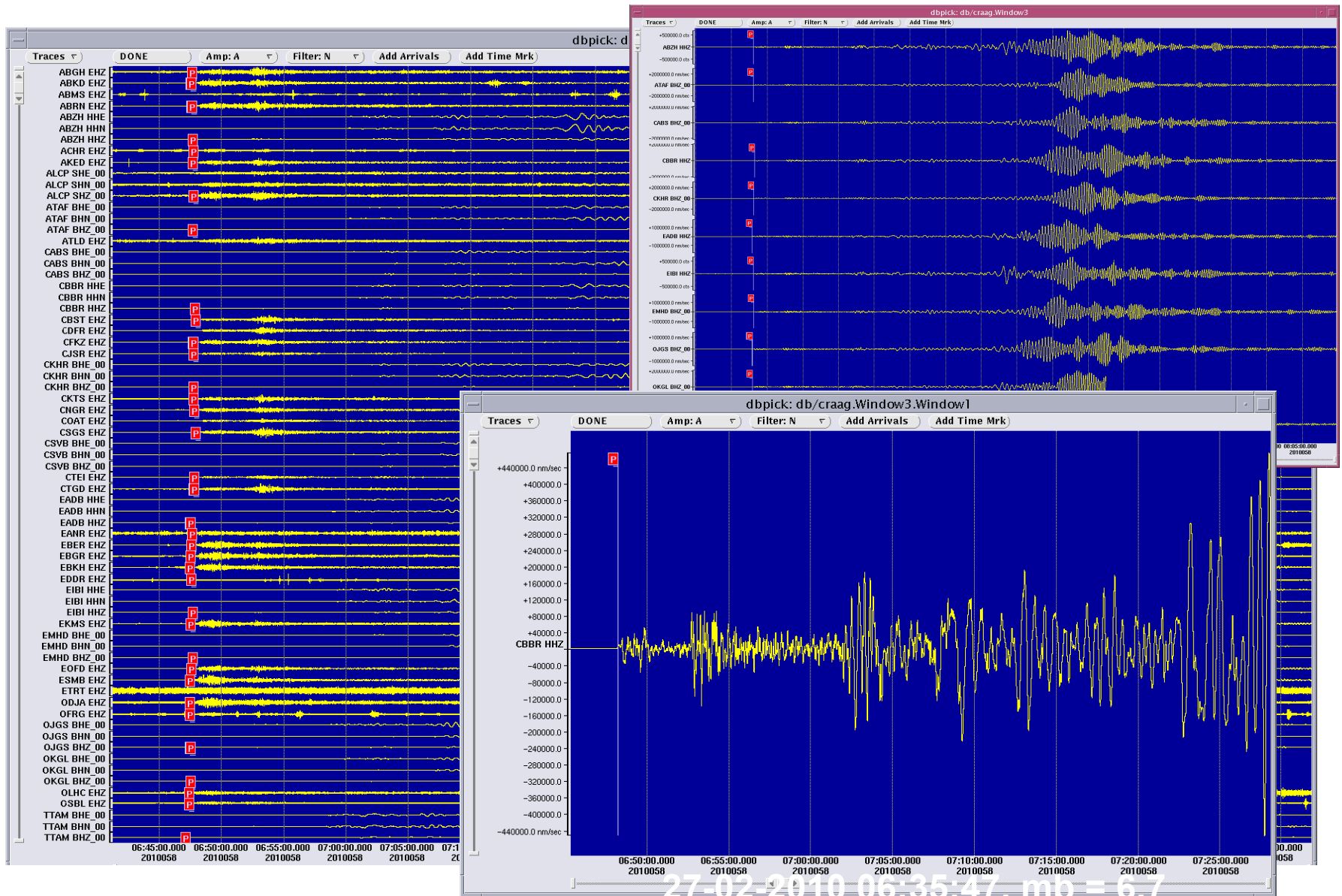


Real-time data acquisition and exchange

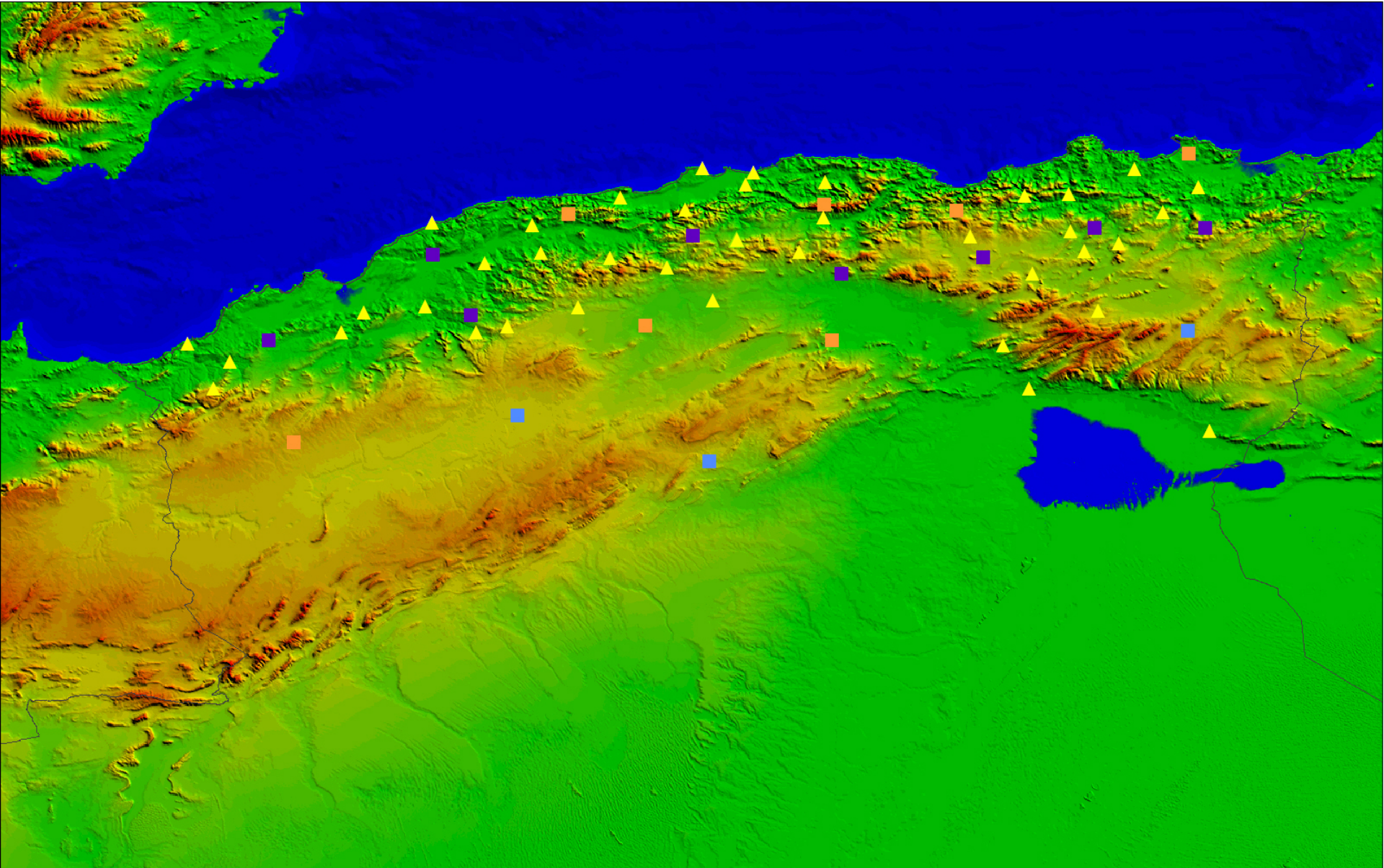
Events recorded by Antelope



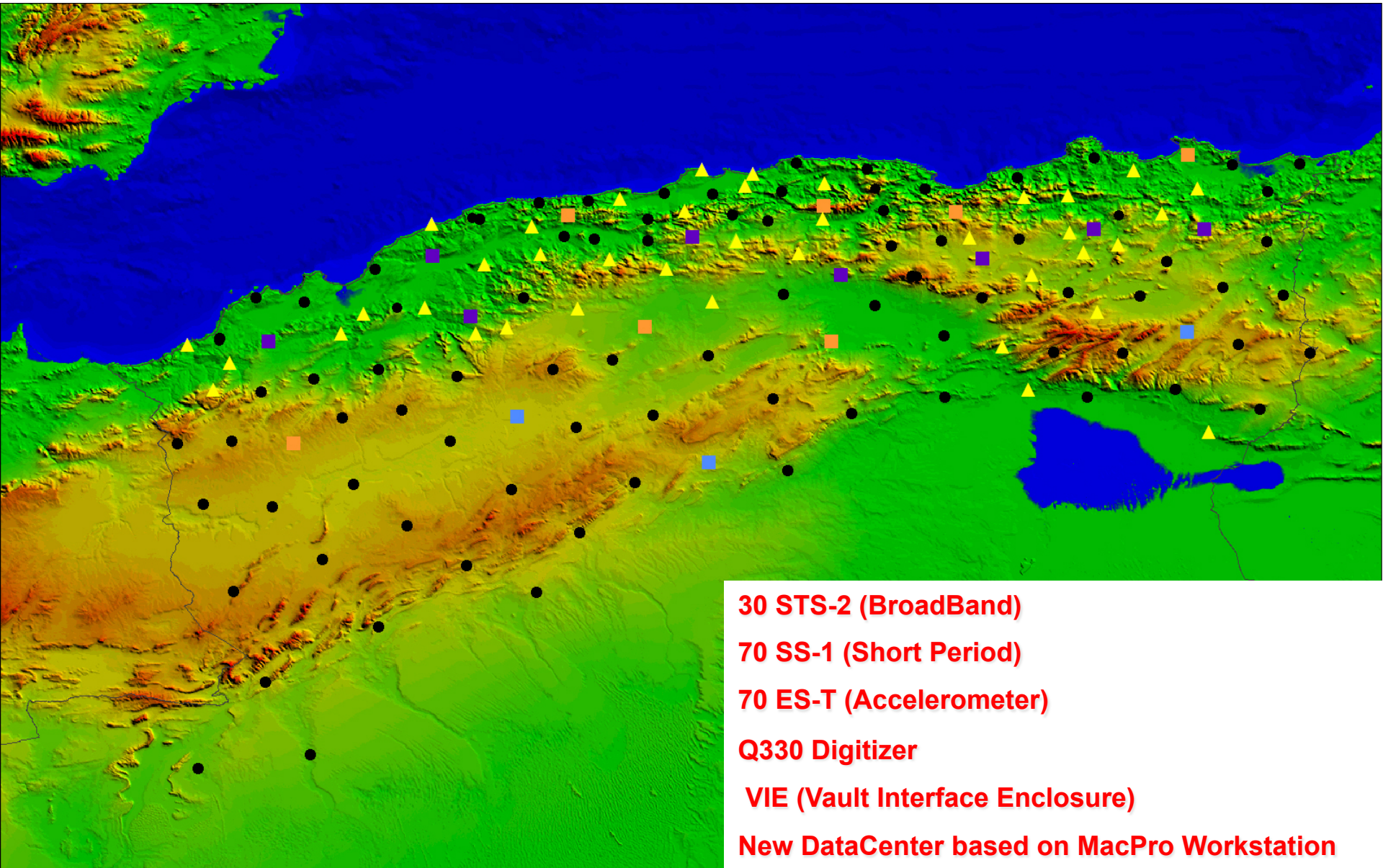
Chilean Earthquake



Actual ADSN



Future ADSN



Future Development

**Seismic Web Monitoring
using *balanced scorecard (BSC)***

**Sites
Descriptor**

Seismic Web Monitoring



SOH

Alert

Statistics

Performance

State indicator

- Link*
- Mass*
- GPS*
- Voltage*
- Temperature*
- Humidity*
- Air Pressure*
- PSD*
- ...*

Alert Indicator

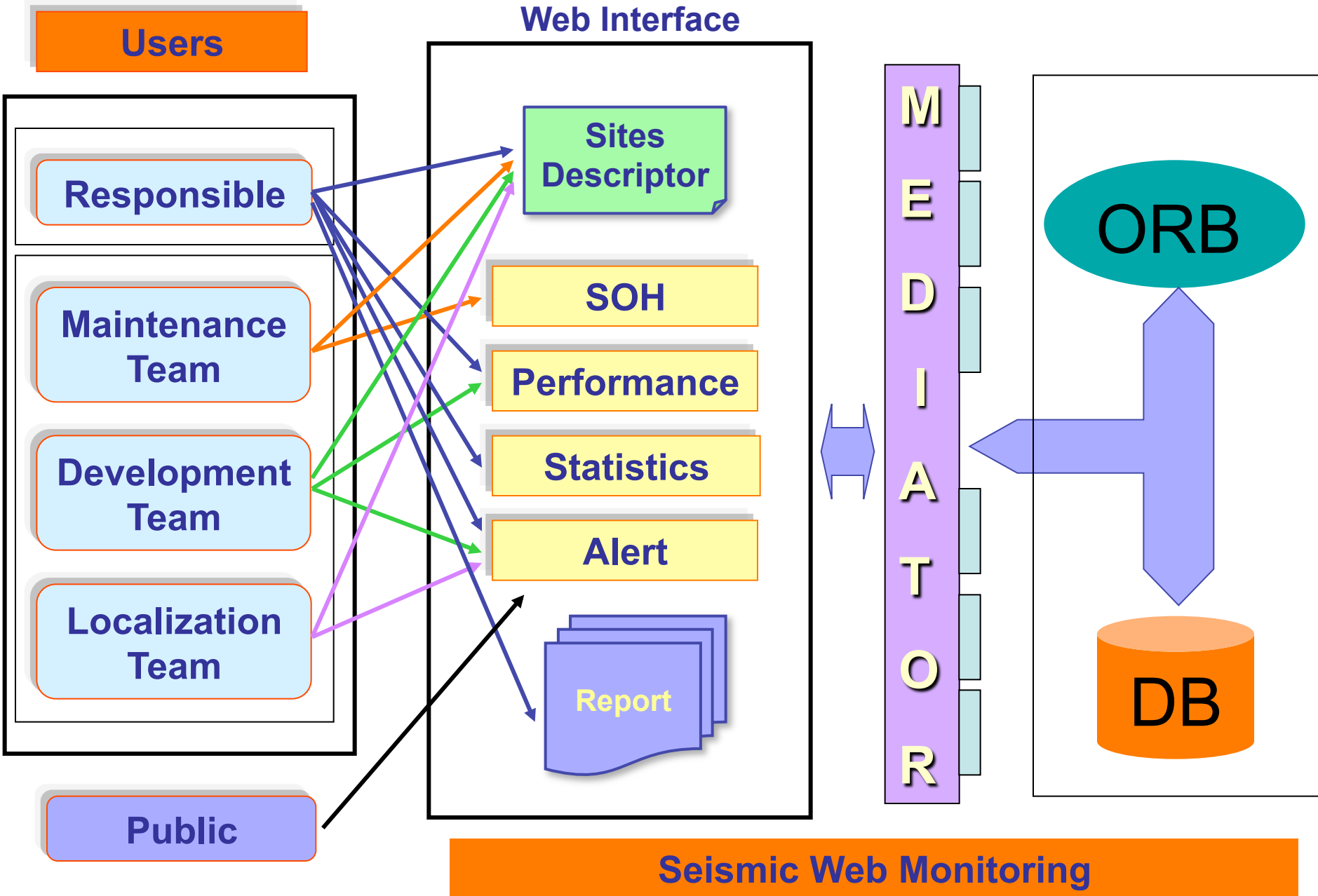
- Last automatic Localization*
- Last manual Localization*
- Last 24h localization*
- Last 48h localization*
- Last week localization*
- Automatic Detection per station*

Statistics indicator

- Rate of operation per month / per station*
- Number of events located per month / per station*
- Number of intervention per month / per station / per category*
- Environment condition per month / per station*
- PSD per month / per station*

Performance indicator

- Coverage map*
- Automatic and manual localization comparison*
- Rate of Operation*



Sites Descriptor

Display Details of sites.

Private Access : ADSN Team' s

* Create a new tables for a no seismic equipments:

- Communication mode : Type of modem, IP address, Link mode, Accessory used

- Detail of power used : AC or DC, Voltage, Solar Panel, Batteries, Charge Controller.

-Environment equipment : Type, IP Address

-Person to contact in site : Name, Phone number

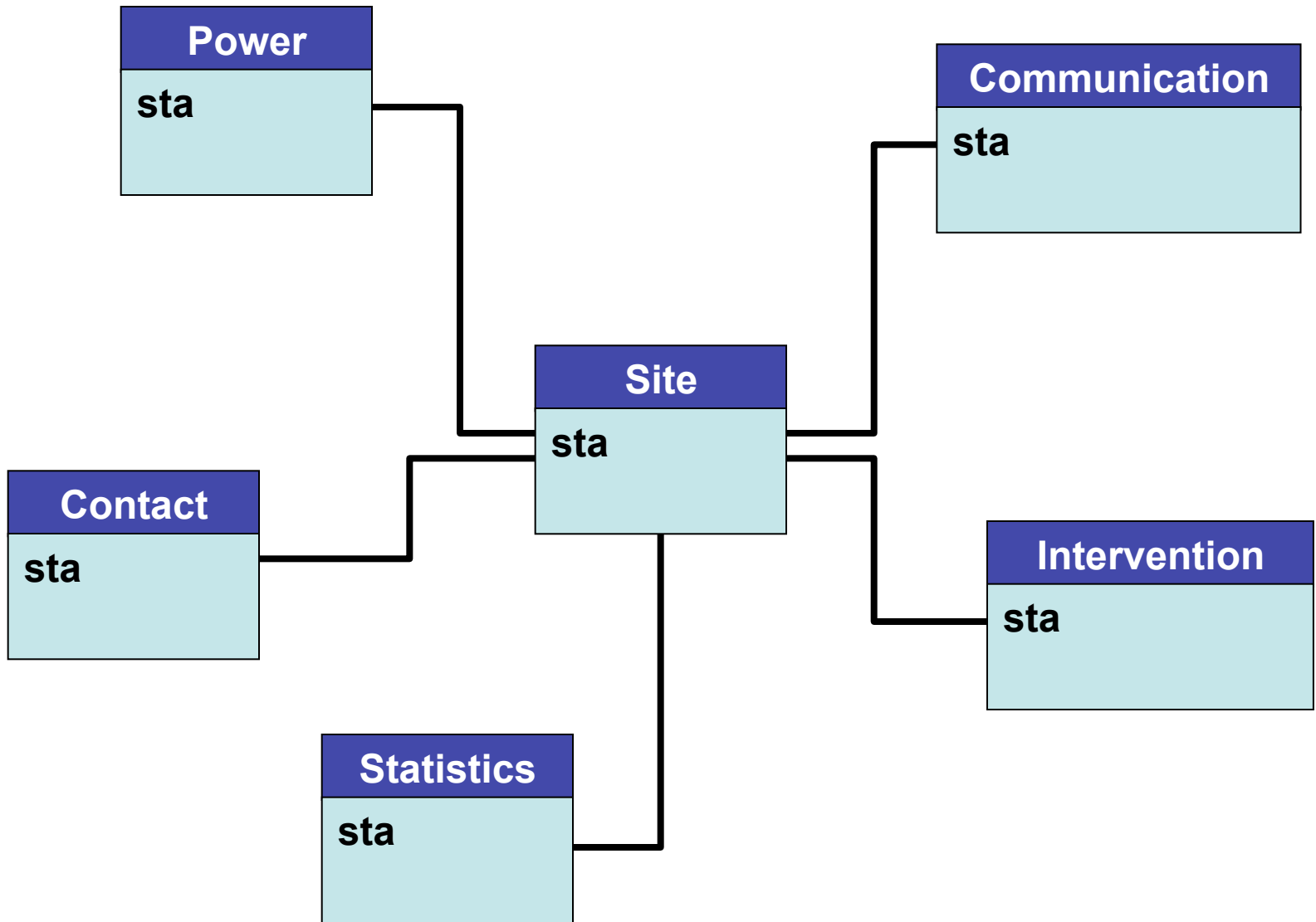
- Details of the Interventions in sites

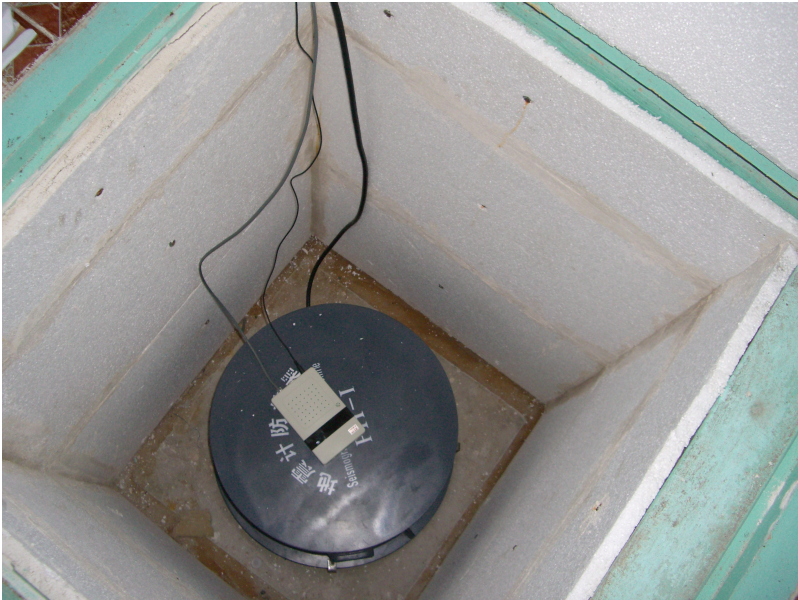
We need :

-Extend Schema css3.0 : Communication and Power, environment, Contact, Intervention

- Use : dbcreate -r craag -s <schema> craag

- Generate a new interface to add details





SOH

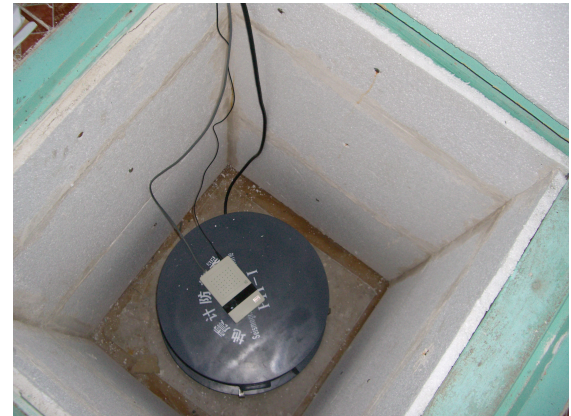
Display state of health.

Private Access : Maintenance Team, Responsible

- Use Webdlmon interface
- Create a new table for the Environment Condition : Temperature, Humidity and Air Pressure generated by External Environment Equipment
- Use PQLX to compute PSD

We need :

- *Extend Schema css3.0 : Env_Condition*
- *Use : dbcreate -r craag -s <schema> craag*
- *Create Script to input Temperature , Humidity, Air Pressure to the database*
- *Use PQLX*



Alert

Display Last events (Last, 24h,48h, week)

Private Access : Localization and Development Teams, Responsible

Public Access only for manual localization

- **Use event web interface only for last event, 24h, 48h, one week**
- **Generate Alert for the one Detection**

We need :

- **Create a Script to Display automatic detection per Station**

Statistics

Display Statistics :

- *Rate of operation per month / per station*
- *Number of events located per month / per station*
- *Number of intervention per month / per station / per category*
- *Environment condition per month / per station*
- *PSD per month / per station*

Private Access : Responsible

- **Create a new table : Statistics Table**
- **Use PQLX to generate PSD**

We need :

- *Extend Schema css3.0 : Statistics*
Use : dbcreate -r craag -s <schema> craag
- *Create Script to add statistics calculated every month in the database*

Performance

Display :

- Coverage map
- Comparison between automatic and manual localization
- Rate of Operation indicator

**Private Access : Development Teams,
Responsible**

-Define values of performance indicators

(ex : 99,99% of operation is expected)

We need :

- Create Web interfaces to display different performance indicators



Display Report.

Private Access : Responsible

Generate :

- Catalog**
- Seismicity map**
- Maintenance Report**
- Statistic report**

We need :

- Create Scripts to generate reports**

Tools

